

#	DATE	TITLE
PROJECT NUMBER:	00-000	

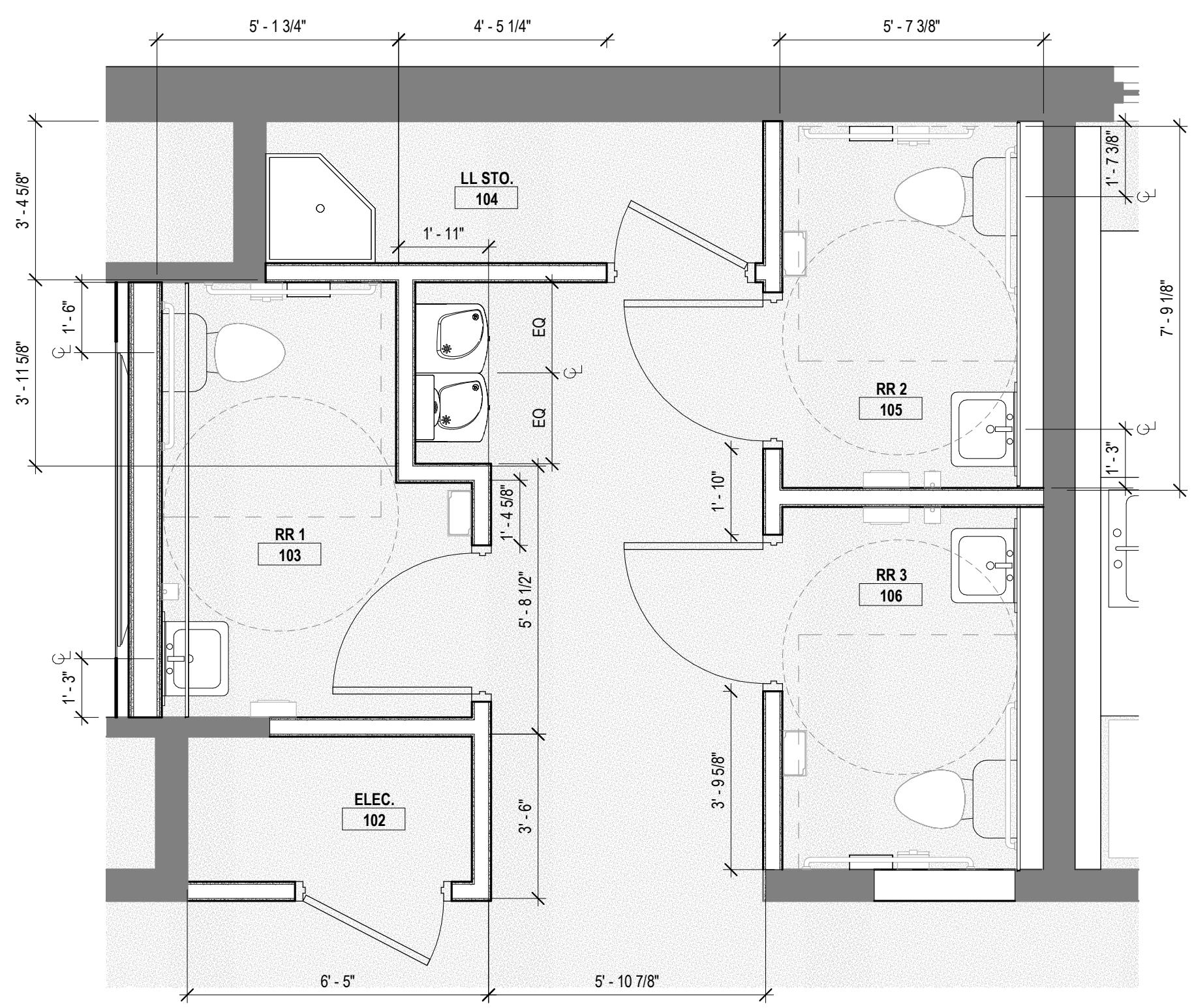
1167 PACE ST. - PHASE I
1167 PACE ST, COVINGTON, GA

DIMENSIONED FLOOR PLAN

A201

THIS DRAWING AND THE FILE FROM WHICH IT HAS BEEN CREATED ARE AN INSTRUMENT OF SERVICE FOR THIS PROJECT. THESE DOCUMENTS ARE THE SOLE PROPERTY OF THE ARCHITECT, AND ANY USE OF THESE DOCUMENTS FOR PURPOSES OTHER THAN THOSE ASSOCIATED WITH THIS PROJECT IS STRICTLY PROHIBITED.

NOT RELEASED FOR CONSTRUCTION

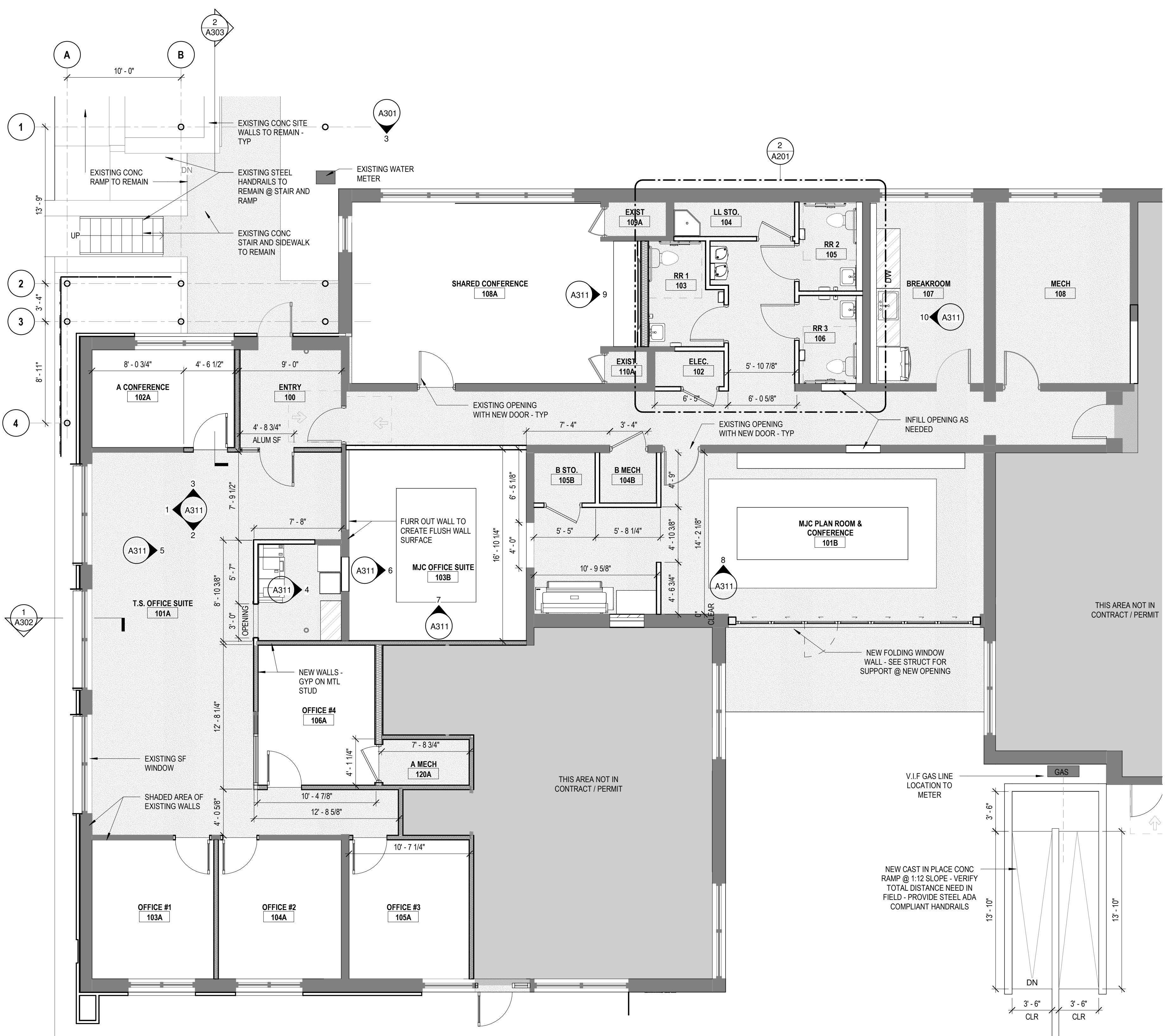
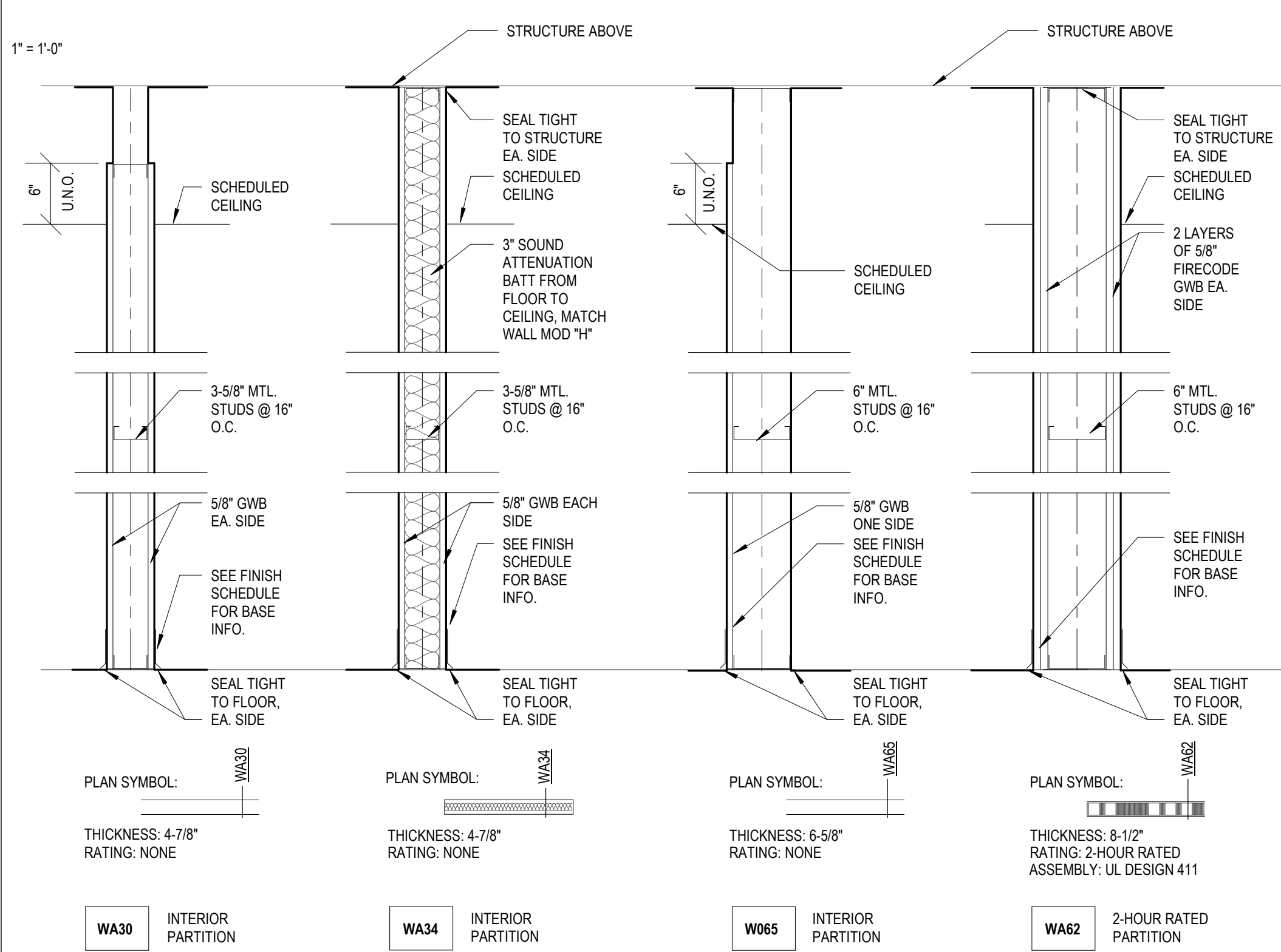


2 ENLARGED RESTROOMS PLAN

TOILET ACCESSORY SCHEDULE

MARK	ITEM DESCRIPTION
TA1A	TOILET TISSUE DISPENSER (B-xxxx)
TA1C	SINGLE SURFACE MOUNTED SANITARY NAPKIN RECEPTACLE (B-xxxx)
TA1D	SURFACE MOUNTED PAPER TOWEL DISPENSER (B-xxxx)
TA1G	SURFACE MOUNTED SOAP DISPENSER (B-xxxxx)
TA1J	FIXED MIRROR - 18" x 36" (B-290)
TA1L	36" GRAB BAR (B-8806)
TA2E	42" GRAB BAR (B-8806)
TA2G	SURFACE MOUNTED ROBE HOOK (B-76717)
TA3S	RECESSED MOUNTED BABY CHANGING STATION?
TA4F	SURFACE MOUNTED WASTE RECEPTACLE

METAL STUD WALL TYPES



1 FLOOR PLAN - FIRST FLOOR

RESTROOM GENERAL NOTES

- INSULATE ALL EXPOSED HOT WATER PIPING AT HANDICAP LOCATIONS.
- MIRRORS SHALL BE CENTERED OVER SINKS, TYP.
- SHOULD ANY DISCREPANCY BE FOUND BETWEEN ITEMS NOTED IN THE CONTRACT DOCUMENTS AND THE APPLICABLE CODES, THE CONTRACTOR SHALL BRING ITEMS TO THE ATTENTION OF THE ARCHITECT PRIOR TO ORDERING, FABRICATING OR INSTALLING.
- PROVIDE SUPPORT STUDS BEHIND ALL WALL MOUNTED SHELF LOCATIONS.

GENERAL NOTES

- ALL GYPSUM BOARD AT KITCHEN AND BATH AREAS SHALL BE WATER RESISTANT.
- INSTALL BLOCKING AT ALL BATHROOM ACCESSORIES, WALL CABINETS, AND SHELVING.
- CENTER LIGHT FIXTURES IN ROOMS OR DOORWAYS WHERE APPLICABLE UNLESS OTHERWISE NOTED.
- DOORS ARE DIMENSIONED TO CENTER OF OPENING & DOORS TYPICALLY 4" OFF FACE OF JAMB TO WALL FRAMING UNLESS OTHERWISE NOTED.
- WALLS ARE DIMENSIONED FROM FACE OF FRAMING UNLESS OTHERWISE NOTED.
- CENTER VANITY LIGHTS OVER SINKS UNLESS OTHERWISE NOTED.

PARTITION LEGEND

