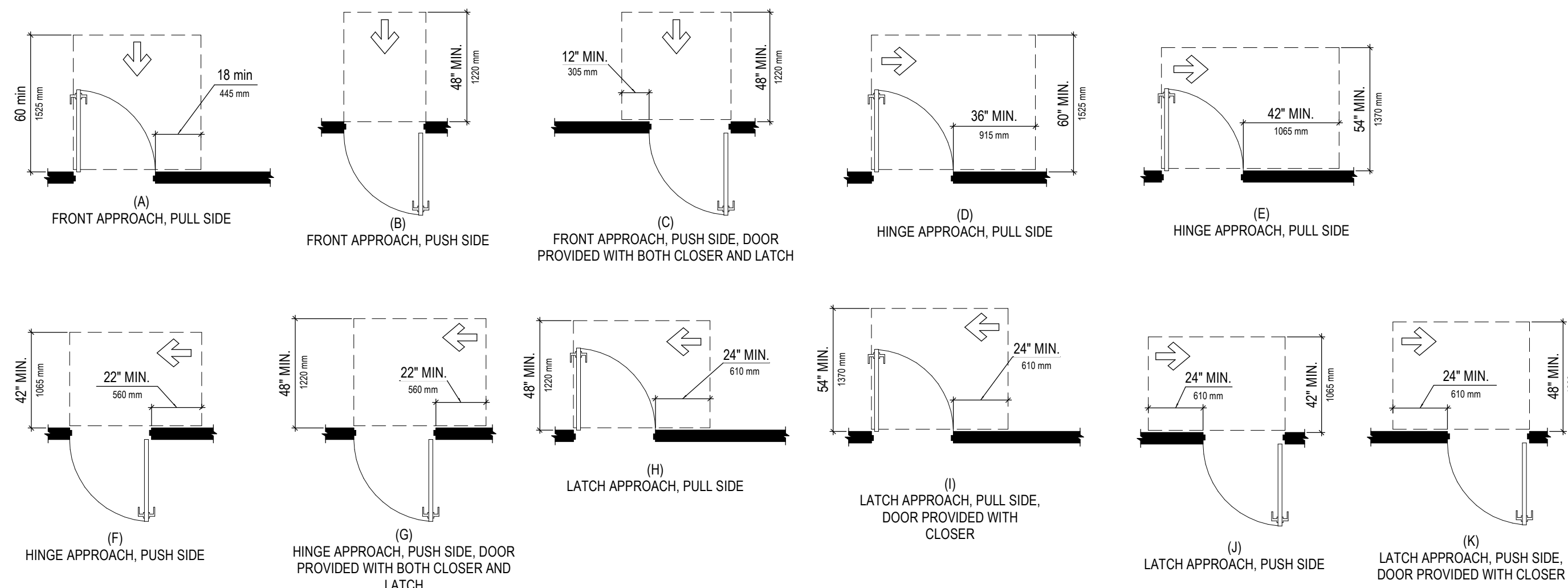
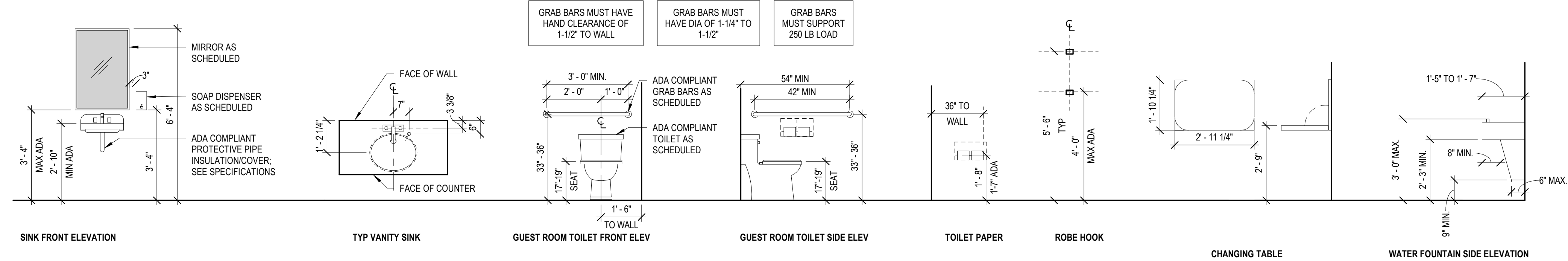


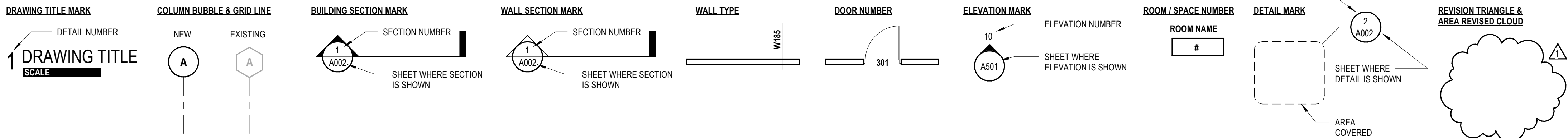
ADA DOOR DIAGRAMS



RESTROOM ACCESSORY DIAGRAMS



SYMBOL KEY



ABBREVIATIONS

#/FT PER FOOT	C CHANNEL	FAB FABRICATE	MATL MATERIAL	QT QUARRY TILE	T&G TONGUE AND GROOVE
@ AT	CAB CABINET	FE FIRE EXTINGUISHER - WALL MOUNT	MAX MAXIMUM	RAD RADIUS	TEL TELEPHONE
A/C AIR CONDITIONING	CC COLOR CHANGE	FEC FIRE EXTINGUISHER - RECESSED CABINET	MDF MEDIUM-DENSITY FIBERBOARD	RPC REFLECTED CEILING PLAN	TEXT TEXTURE
AB ANCHOR BOLT	CER CERAMIC	FFE FINISH FLOOR ELEVATION	MECH MECHANICAL	RD ROOF DRAIN	THK THICKNESS
ABV ABOVE	CIP CAST-IN-PLACE	FIN FINISH	MFR MANUFACTURER	REQ REQUIRED	THOLD THRESHOLD
AC AIR CONDITIONING	CJ CONTROL JOINT	FLR FLOOR	MIN MINIMUM	REINF REINFORCED	TJ TOOL JOINT
ACMU ARCHITECTURAL CONCRETE MASONRY UNIT	CLG CEILING	FO FACE OF	MISC MISCELLANEOUS	RJ RAKED JOINT	TOC TOP OF CURB
ACMU ALUMINUM COMPOSITE METAL	CLM COMPOSITE METAL PANEL	FR GWB FIRE RATED GYPSUM WALLBOARD	MO MASONRY OPENING	RL RAIN LEADER	TOM TOP OF MASONRY
ACUST ACOUSTICAL	CMU CONCRETE MASONRY UNIT	FTG FOOTING	MOD MODIFIED	RO ROUGH OPENING	TOS TOP OF STEEL
ACT ACOUSTICAL CEILING TILE	CO CLEAN OUT	FV FIELD VERIFY	MOD BIT MODIFIED BITUMEN	RTD RATED	TPO THERMOPLASTIC POLYOLEFIN
ADJ ADJACENT	COL COLUMN	GA GAUGE	MR MOISTURE RESISTANT	SAS SMOOTH FOUR SIDES	TYP TYPICAL
AFF ABOVE FINISHED FLOOR	COL COLUMN	GALV GALVANIZED	SC SOLID CORE	SC SOLID CORE	UNO UNLESS NOTED OTHERWISE
AIA AMERICAN INSTITUTE OF ARCHITECTS	CONC CONCRETE MASONRY UNIT	GC GENERAL CONTRACTOR	SHLV SHELVES	SHLV SHELVES	VAP VAPOR BARRIER
AIB AIR INFILTRATION BARRIER	CONT CONTINUOUS	GTR GUTTER	SHT SHEET	SHT SHEET	VCT VENT
AISC AMERICAN INSTITUTE OF STEEL CONSTRUCTION	CSI CONSTRUCTION SPECIFICATIONS INSTITUTE	GWB GYPSUM WALLBOARD	SIM SIMILAR	SIM SIMILAR	VENT VENTILATION
ALT ALTERNATE	CT CERAMIC TILE	GYP BD GYPSUM WALLBOARD	SQ SQUARE	SQ SQUARE	VIF VERIFY IN FIELD
ALUM ALUMINUM	DAS DRESSED FOUR SIDES	HG HT HOSE BIBB	STD STANDARD	STD STANDARD	VVC VINYL WALLCOVERING
ANSI AMERICAN NATIONAL STANDARDS INSTITUTE	DBL DOUBLE	HORIZ HORIZONTAL	STL STEEL	STL STEEL	W/ WITH
APPROX APPROXIMATE	DET DETAIL	IBC INTERNATIONAL BUILDING CODE	STOR STORAGE	STOR STORAGE	WWF WELDED WIRE FABRIC
ARCH ARCHITECT	DIAG DIAGONAL	INSUL INSULATION	STR STAIR	STR STAIR	WWM WELDED WIRE MESH
ASTM AMERICAN SOCIETY FOR TESTING AND MATERIALS	DS DOWNSPOUT	INT INTERIOR	STRUCT STRUCTURAL	STRUCT STRUCTURAL	
AUTO AUTOMATIC	DWG DRAWING	LAM LAMINATE	SUB SUBCONTRACTOR	SUB SUBCONTRACTOR	
BD BOARD	EB EXPANSION BOLT	LAV LAVATORY	SUSP SUSPENDED	SUSP SUSPENDED	
BF BOARD FOOT	EFC EPOXY FLOOR COATING	LLH LONG LEG HORIZONTAL			
BFA BARRIER FREE ACCESSIBLE	EIFS EXTERIOR INSULATION FINISHING SYSTEM	LLV LONG LEG VERTICAL			
BLKG BLOCKING	EJ EXPANSION JOINT	LSC LIFE SAFETY CODE			
BM BEAM	ELEC ELECTRICAL				
BOC BOTTOM OF CURB	EQ EQUAL				
BRK BRICK	EQUIP EQUIPMENT				
BTWN BETWEEN	ERD EMERGENCY ROOF DRAIN				
	ES EACH SIDE				
	EW EACH WAY				
	EXP EXPANSION				
	EXP JT EXPANSION JOINT				
	EXT EXTERIOR				

PROJECT TEAM

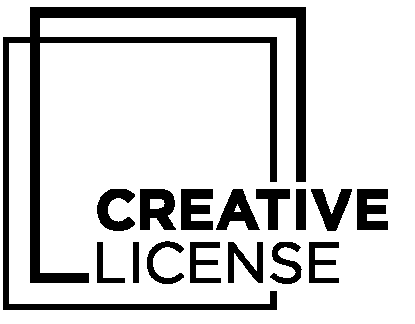
OWNER + DEVELOPER	BUSINESS NAME: TIRE SOUTH
	ADDRESS: 1167 PACE ST. COVINGTON, GA
	PHONE: 770.312.7254
	CONTACT NAME: MICHAEL SPENCER
	JESSICA SPENCER
	EMAIL: MICHAEL@TIRESOUTH.COM
ARCHITECT OF RECORD	BUSINESS NAME: CREATIVE LICENSE
	ADDRESS:
	PHONE:
	AOR CONTACT NAME: DANNY ENGLAND
	STATE LICENSE #:
	EMAIL: DANNY@CREATIVELICENSE.STUDIO
	INTERIOR DESIGNER: MORGAN JUSTIS
	EMAIL: MORGAN@CREATIVELICENSE.STUDIO
STRUCTURAL ENGINEER	BUSINESS NAME:
	ADDRESS:
	PHONE:
	CONTACT NAME:
	EMAIL:
MEP ENGINEER	BUSINESS NAME: WESTSIDE ENGINEERING...
	ADDRESS: 5525 INTERSTATE NORTH PARKWAY SUITE 200 ATLANTA, GA 30328
	PHONE: 404.965.1287
	CONTACT NAME:
	EMAIL:

APPLICABLE CODES

BUILDING CODE	International Building Code, 2018 Edition with Georgia Amendments (2020)
FIRE CODE	International Fire Code, 2018 Edition (Contract State Fire Marshal)
PLUMBING CODE	International Plumbing Code, 2018 Edition with Georgia Amendments (2020)
MECHANICAL CODE	International Mechanical Code, 2018 Edition, with Georgia Amendments (2020)
FUEL GAS CODE	International Fuel Gas Code, 2018 Edition, with Georgia Amendments (2020)
ELECTRICAL CODE	International Fuel Gas Code, 2018 Edition, with Georgia Amendments (2020)
ENERGY CODE	International Energy Conservation Code, 2015 Edition with Georgia Supplements and...

CODE ANALYSIS

PROJECT ADDRESS	XXX XXXX
OCCUPANCY...	IBC 2018: BUSINESS (B) LSC / NFPA 101 2018: BUSINESS (B)
TYPE OF CONSTRUCTION	IBC: TYPE XX - SPRINKLERED
TOTAL SQUARE FOOTAGE	-



#	DATE	TITLE
	05.21.26	ISSUED FOR CONSTRUCTION

PROJECT NUMBER:	00-000
------------------------	---------------

1167 PACE ST. - PHASE I

1167 PACE ST, COVINGTON, GA

ADA - ABBREV. - SYMBOLS - CODE ANALYSIS

A002

THIS DRAWING AND THE FILE FROM WHICH IT HAS BEEN CREATED ARE AN INSTRUMENT OF SERVICE FOR THIS PROJECT. THESE DOCUMENTS ARE THE SOLE PROPERTY OF THE ARCHITECT. AND ANY USE OF THESE DOCUMENTS FOR PURPOSES OTHER THAN THOSE ASSOCIATED WITH THIS PROJECT IS STRICTLY PROHIBITED.

RELEASED FOR CONSTRUCTION