

#	DATE	TITLE
PROJECT NUMBER: <b>00-000</b>		

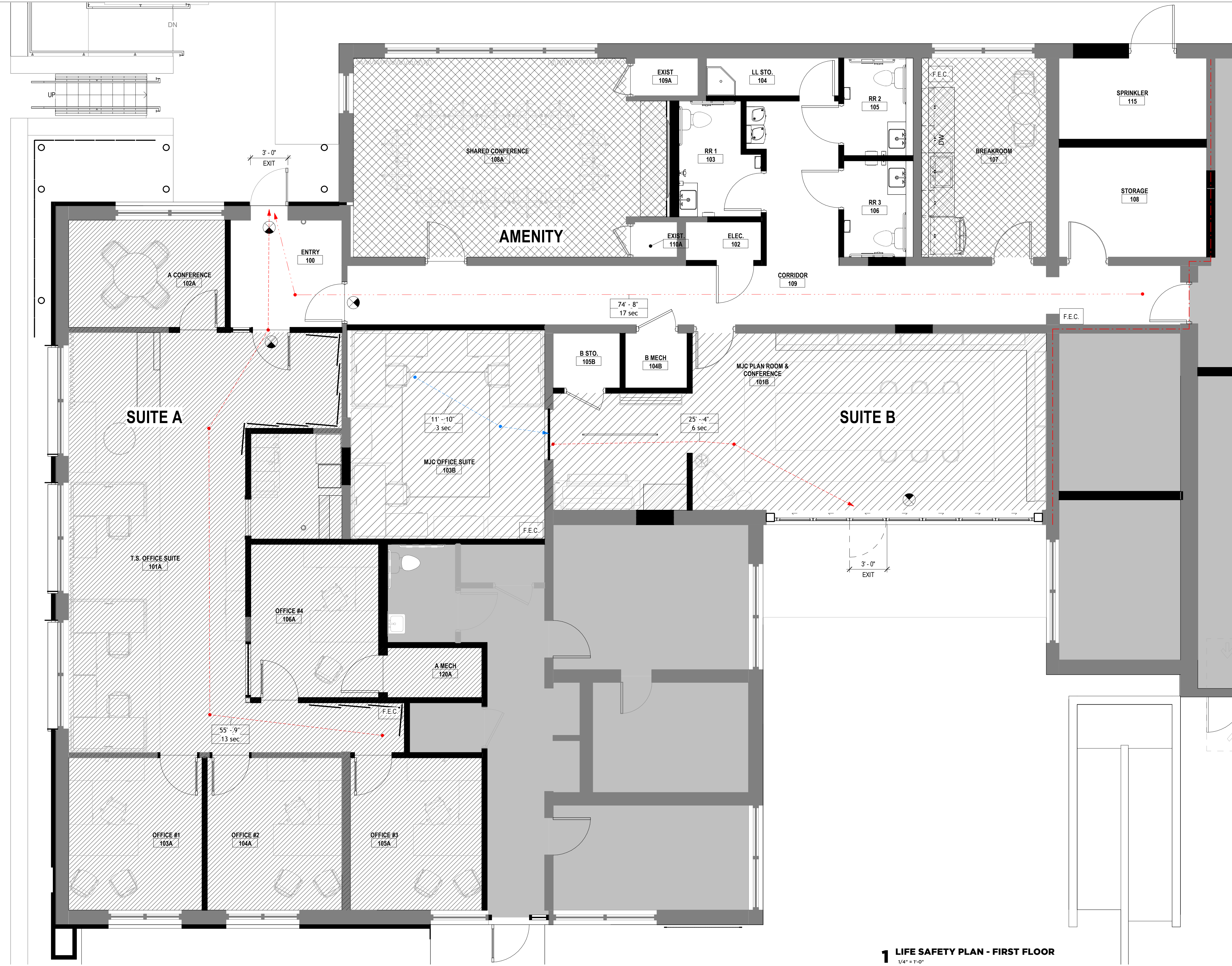
**1167 PACE ST. - PHASE I**  
1167 PACE ST, COVINGTON, GA

**LIFE SAFETY PLAN**

**A004**

THIS DRAWING AND THE FILE FROM WHICH IT HAS BEEN CREATED ARE AN INSTRUMENT OF SERVICE FOR THIS PROJECT. THESE DOCUMENTS ARE THE SOLE PROPERTY OF THE ARCHITECT. AND ANY USE OF THESE DOCUMENTS FOR PURPOSES OTHER THAN THOSE ASSOCIATED WITH THIS PROJECT IS STRICTLY PROHIBITED.

**NOT RELEASED FOR CONSTRUCTION**



**1 LIFE SAFETY PLAN - FIRST FLOOR**  
1/4" = 1'-0"

**PLUMBING CALCULATIONS**

WATER CLOSETS / URINALS REQ'D	MALE: 1 PER 25 FOR THE FIRST 50 = 1 FEMALE: 1 PER 25 FOR THE FIRST 50 = 1
LAVATORIES REQ'D	MALE: 1 PER 40 FOR THE FIRST 80 = 1 FEMALE: 1 PER 40 FOR THE FIRST 80 = 1
DRINKING FOUNTAINS REQ'D	1
SERVICE SINKS REQ'D	1
WATER CLOSETS / URINALS...	MALE: 1.5 FEMALE: 1.5
LAVATORIES PROVIDED	MALE: 1.5 FEMALE: 1.5
DRINKING FOUNTAINS PROVIDED	1
SERVICE SINKS PROVIDED	1

**LIFE SAFETY ANALYSIS**

TOTAL OCCUPANCY:	19 OCCUPANTS
	SUITE A: 1352/150 = 9
	SUITE B: 537/150 = 4
	AMENITY: 774/150 = 6
TOTAL # OF EXITS REQ'D:	SUITE A: 1
	SUITE B: 1
	AMENITY: 1
TOTAL # OF EXITS PROVIDED:	SUITE A: 1
	SUITE B: 2
	AMENITY: 1
MINIMUM ALLOWABLE EXIT REMOTENESS:	N/A
MINIMUM EXIT REMOTENESS DESIGNED:	N/A
MINIMUM EGRESS WIDTH CALCULATIONS:	19' 2" = 3.8
MAXIMUM TRAVEL DISTANCE ALLOWABLE:	
MAXIMUM TRAVEL DISTANCE DESIGNED:	74'-8"
MAXIMUM DEAD-END CORRIDOR:	
MAXIMUM DEAD-END CORRIDOR DESIGNED:	

**LIFE SAFETY GRAPHIC LEGEND**

NOT IN SCOPE	COUNTER TOP
BUSINESS	MAX TRAVEL DISTANCE
DIRECTIONAL EXIT SIGN	TRAVEL DISTANCE
EXIT SIGN	COMMON PATH
F.E.C. RECESSED OR SEMI-RECESSED FIRE EXTINGUISHER CABINET RECESSED IN STUD WALL 6" OR DEEPER	

**PARTITION LEGEND**

SEE DIAGRAM FOR DETAILS

1-HOUR FIRE BARRIER UL # U337
NEW INTERIOR PARTITION
EXISTING INTERIOR PARTITION