

#	DATE	TITLE
PROJECT NUMBER: 00-000		

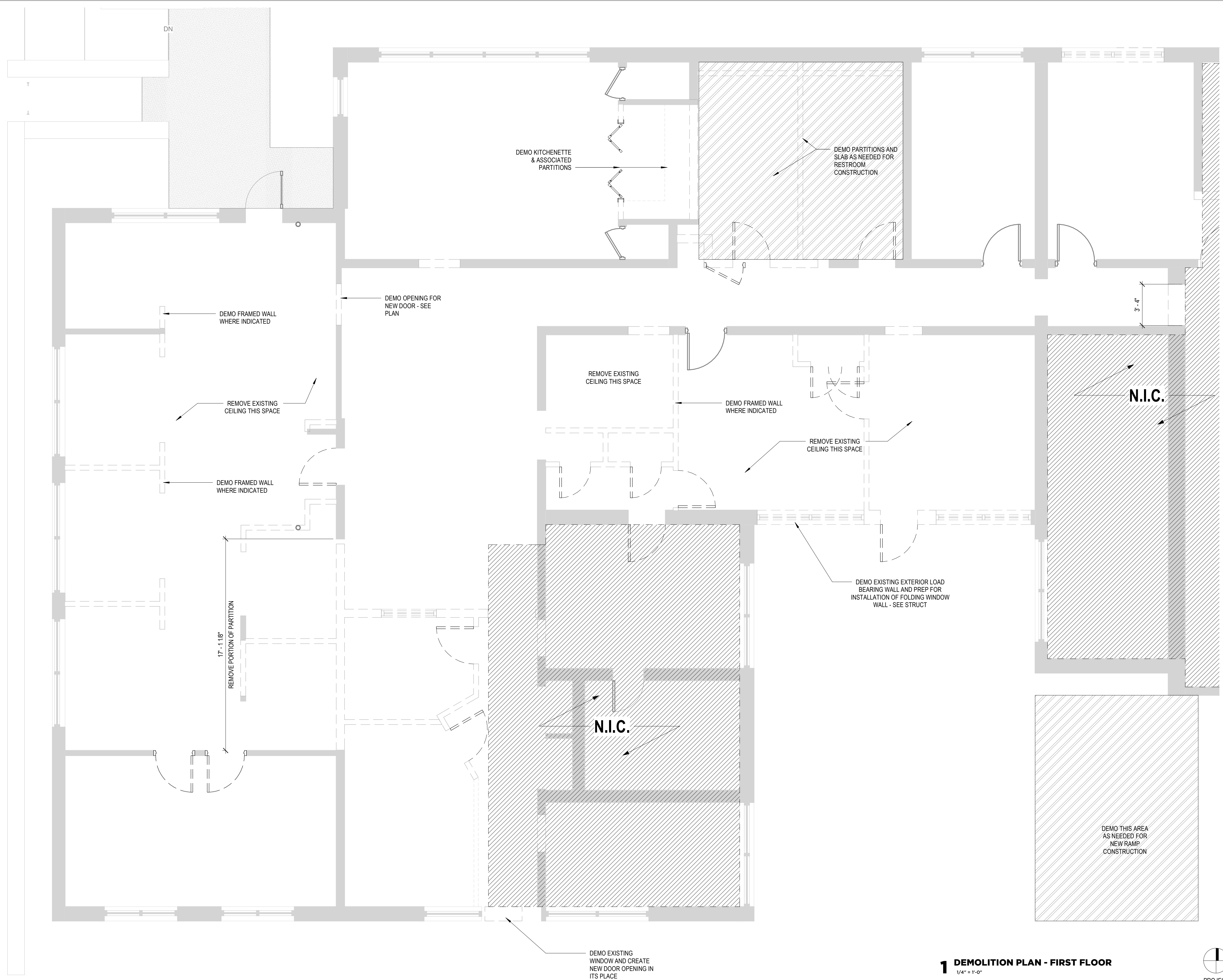
1167 PACE ST. - PHASE I
1167 PACE ST, COVINGTON, GA

DEMOLITION PLAN - FIRST FLOOR

D101

THIS DRAWING AND THE FILE FROM WHICH IT HAS BEEN CREATED ARE AN INSTRUMENT OF SERVICE FOR THIS PROJECT. THESE DOCUMENTS ARE THE SOLE PROPERTY OF THE ARCHITECT. AND ANY USE OF THESE DOCUMENTS FOR PURPOSES OTHER THAN THOSE ASSOCIATED WITH THIS PROJECT IS STRICTLY PROHIBITED.

NOT RELEASED FOR CONSTRUCTION



1 DEMOLITION PLAN - FIRST FLOOR
1/4" = 1'-0"



GENERAL NOTES

- DEMOLITION CONTRACTOR SHALL PROVIDE FIRE EXTINGUISHERS AT EVERY LEVEL AND AS THE FIRE SAFETY CODE REQUIRES AT ALL TIMES
- CONTRACTOR IS RESPONSIBLE FOR ALL TEMPORARY SHORING DURING CONSTRUCTION AND PERMANENT SHORING
- WALLS ARE DIMENSIONED FROM FACE OF FRAMING UNLESS OTHERWISE NOTED
- CONTRACTOR SHALL SNAKE ALL EXISTING SITE DRAINS, PIPES, AND DOWNSPOUTS
- NO KEYED LOCKS ARE PERMITTED ON EGRESS SIDE OF EXTERIOR EXIT DOORS.
- THE CONTRACTOR SHALL PERMANENTLY IDENTIFY ALL FIRE RATED WALLS REQUIRED TO HAVE PROTECTED OPENINGS, CORRIDOR PARTITIONS, SMOKESTOP PARTITIONS, HORIZONTAL EXIT PARTITIONS AND EXIT ENCLOSURES EITHER BY INSTALLING SIGNS FOLLOWING: FIRE AND SMOKE BARRIER - PROTECT ALL OPENINGS TO ENSURE PROPER INSTALLATION OF RATED WALL ASSEMBLY AT REPAIRED AREAS.
- CONTRACTOR SHALL PLAN & IMPLEMENT A PROPER FIRE SAFETY PROGRAM & TRAIN WORKERS FOR MEASURES IN THE CASE OF AN EMERGENCY. FIRE EXTINGUISHERS SHALL BE EASILY VISIBLE & ACCESSIBLE AT ALL AREAS OF WORK AT ALL TIMES.

PARTITION LEGEND

- SEE SECTIONS FOR DETAILS
- EXISTING PARTITIONS TO REMAIN
 - ELEMENTS TO BE DEMOLISHED