

#	DATE	TITLE
PROJECT NUMBER:	00-000	

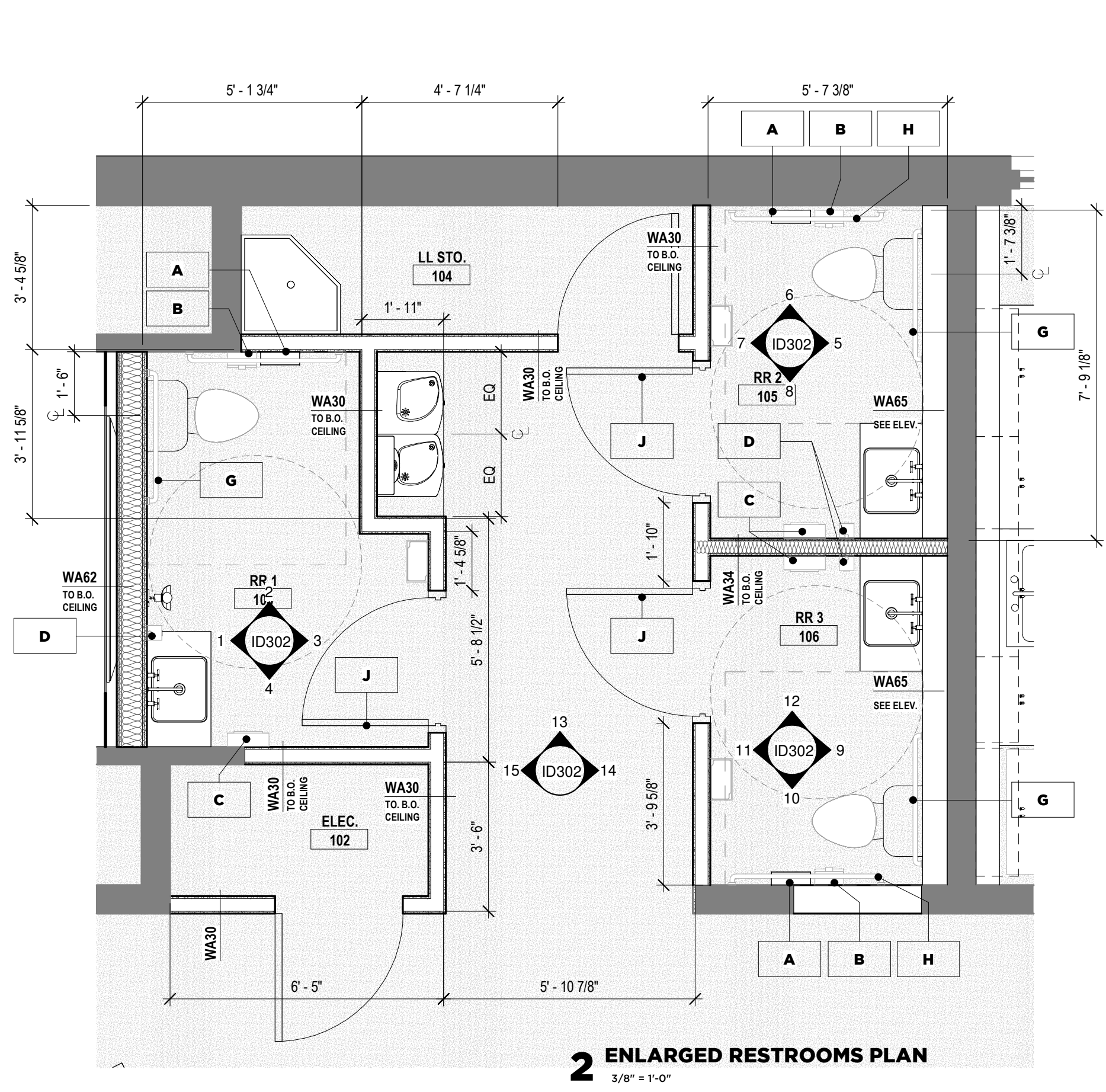
**1167 PACE ST. - PHASE I**  
1167 PACE ST, COVINGTON, GA

**DIMENSIONED FLOOR PLAN**

**A201**

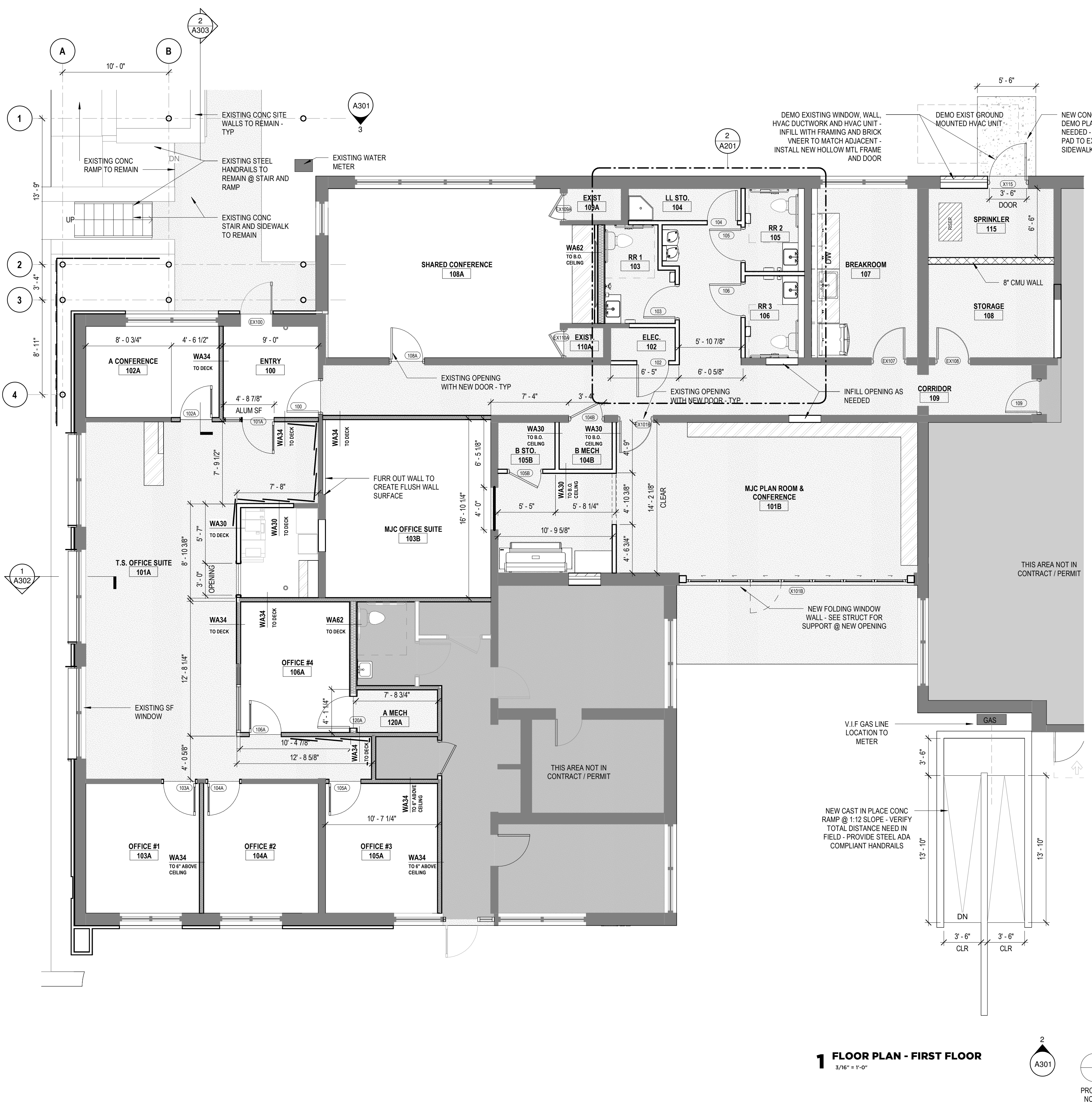
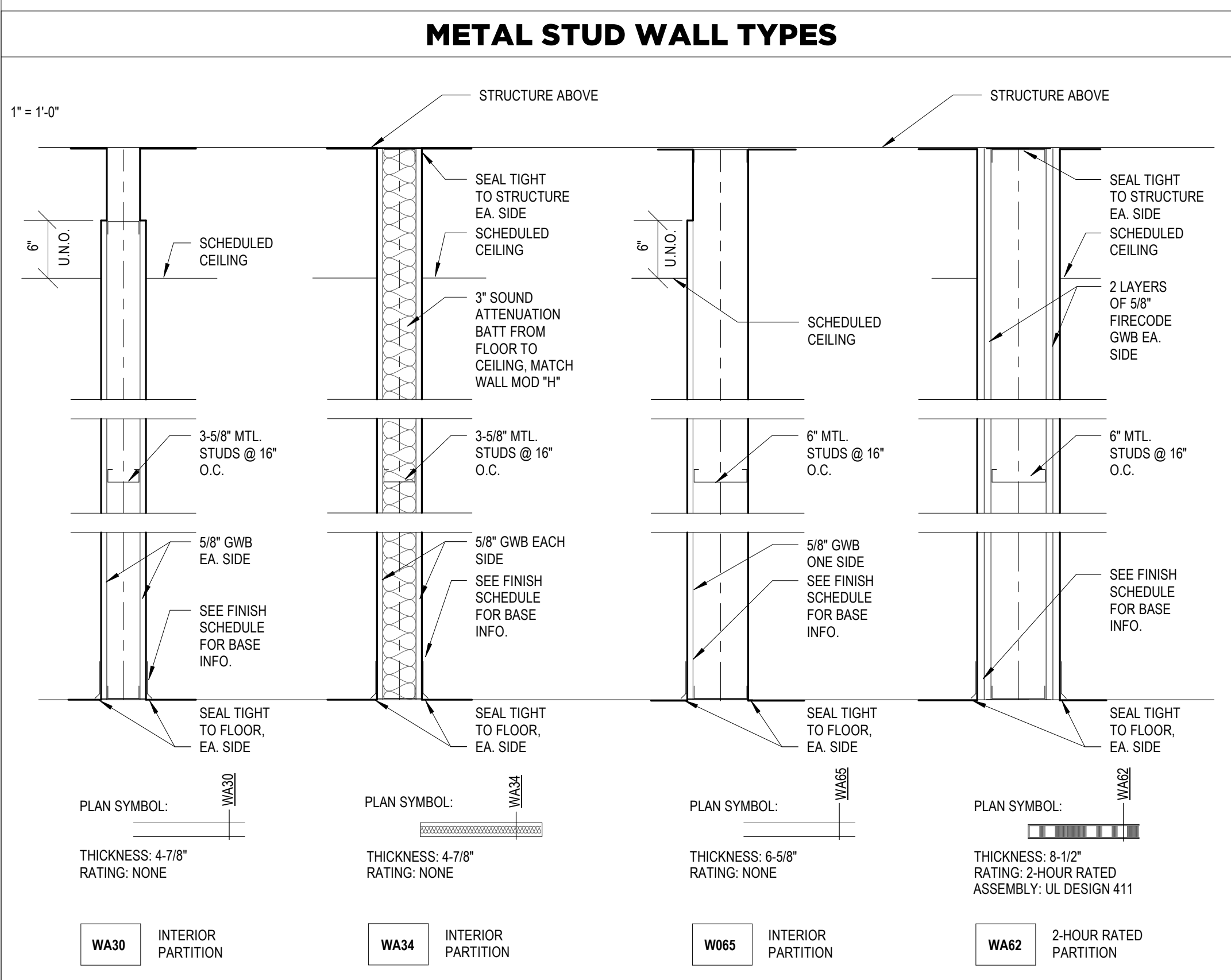
THIS DRAWING AND THE FILE FROM WHICH IT HAS BEEN CREATED ARE AN INSTRUMENT OF SERVICE FOR THIS PROJECT. THESE DOCUMENTS ARE THE SOLE PROPERTY OF THE ARCHITECT, AND ANY USE OF THESE DOCUMENTS FOR PURPOSES OTHER THAN THOSE ASSOCIATED WITH THIS PROJECT IS STRICTLY PROHIBITED.

RELEASED FOR CONSTRUCTION



**RESTROOM ACCESSORY SCHEDULE**

A	SURFACE MTD. TOILET TISSUE DISPENSER (BOBRICK B-540.MTLBK)
B	SINGLE SURFACE MOUNTED SANITARY NAPKIN RECEPTACLE (BOBRICK B-35139.MTLBK)
C	SURFACE MOUNTED PAPER TOWEL DISPENSER, MATTE BLACK, 525 MULTIFOLD TOWELS (BOBRICK B-9262.MBLK)
D	SURFACE MOUNTED AUTO LIQUID SOAP DISPENSER, MATTE BLACK (BOBRICK B-2012.MBLK)
E	SURFACE MOUNTED TRASH RECEPTACLE (BOBRICK B-9279.MTLBK)
F	FIXED MIRROR (LUMENS UTTERMOST VARINA MIRROR IN GOLD)
G	36" GRAB BAR (GAMCO B-150C.MTLBK X 36)
H	42" GRAB BAR (GAMCO B-150C.MTLBK X 42)
J	SURFACE MOUNTED ROBE HOOK (FERGUSON SIGNATURE BRILLEE REEDED BRASS)



- RESTROOM GENERAL NOTES**
- INSULATE ALL EXPOSED HOT WATER PIPING AT HANDICAP LOCATIONS.
  - MIRRORS SHALL BE CENTERED OVER SINKS, TYP.
  - SHOULD ANY DISCREPANCY BE FOUND BETWEEN ITEMS NOTED IN THE CONTRACT DOCUMENTS AND THE APPLICABLE CODES, THE CONTRACTOR SHALL BRING ITEMS TO THE ATTENTION OF THE ARCHITECT PRIOR TO ORDERING, FABRICATING OR INSTALLING.
  - PROVIDE SUPPORT STUDS BEHIND ALL WALL MOUNTED SHELF LOCATIONS.
  - IF A CONFLICT BETWEEN ANY TOILET ACCESSORIES OCCURS, NOTIFY ARCHITECT FOR DIRECTION PRIOR TO INSTALLATION.
  - ALL DOORS TO HANDICAP ACCESSIBLE TOILET STALLS OR ROOMS SHALL BE OUTWARD SWINGING AND SELF CLOSING, UNO.
  - WHERE SPECIFIED, TILE SHALL BE CENTERED ON WALL, UNO.
  - SET ALL FLOOR DRAINS IN NEW SLABS AT .01" AND SLOPE FLOOR TO DRAIN. COORD WITH STRUCTURAL AND PLUMBING.

- GENERAL NOTES**
- ALL GYPSUM BOARD AT KITCHEN AND BATH AREAS SHALL BE WATER RESISTANT.
  - INSTALL BLOCKING AT ALL BATHROOM ACCESSORIES, WALL CABINETS, AND SHELVING.
  - CENTER LIGHT FIXTURES IN ROOMS OR DOORWAYS WHERE APPLICABLE UNLESS OTHERWISE NOTED.
  - DOORS ARE DIMENSIONED TO CENTER OF OPENING & DOORS TYPICALLY 4" OFF FACE OF JAMB TO WALL FRAMING UNLESS OTHERWISE NOTED.
  - WALLS ARE DIMENSIONED FROM FACE OF FRAMING UNLESS OTHERWISE NOTED.
  - CENTER VANITY LIGHTS OVER SINKS UNLESS OTHERWISE NOTED.

