

#	DATE	TITLE
PROJECT NUMBER: <b>00-000</b>		

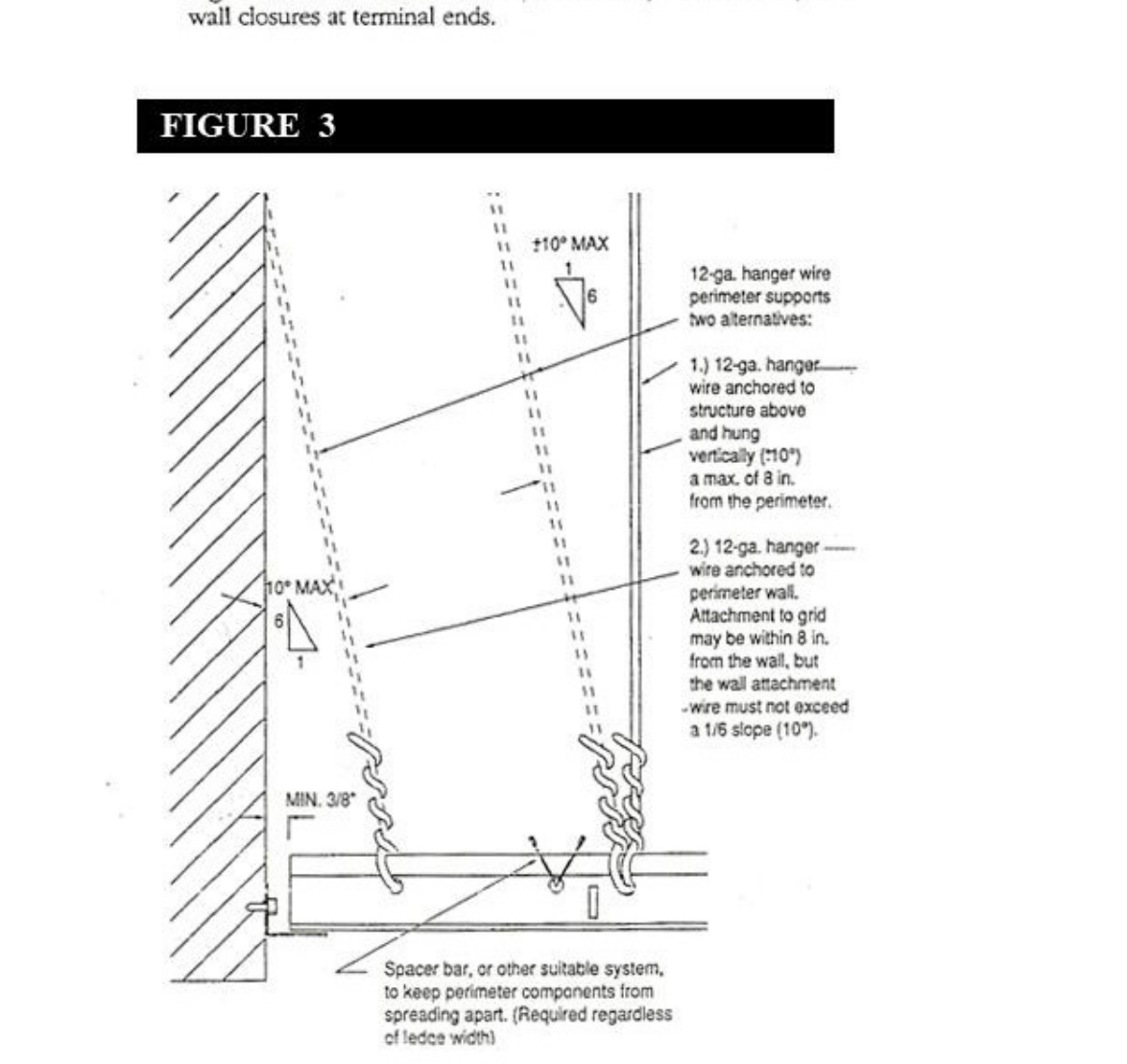
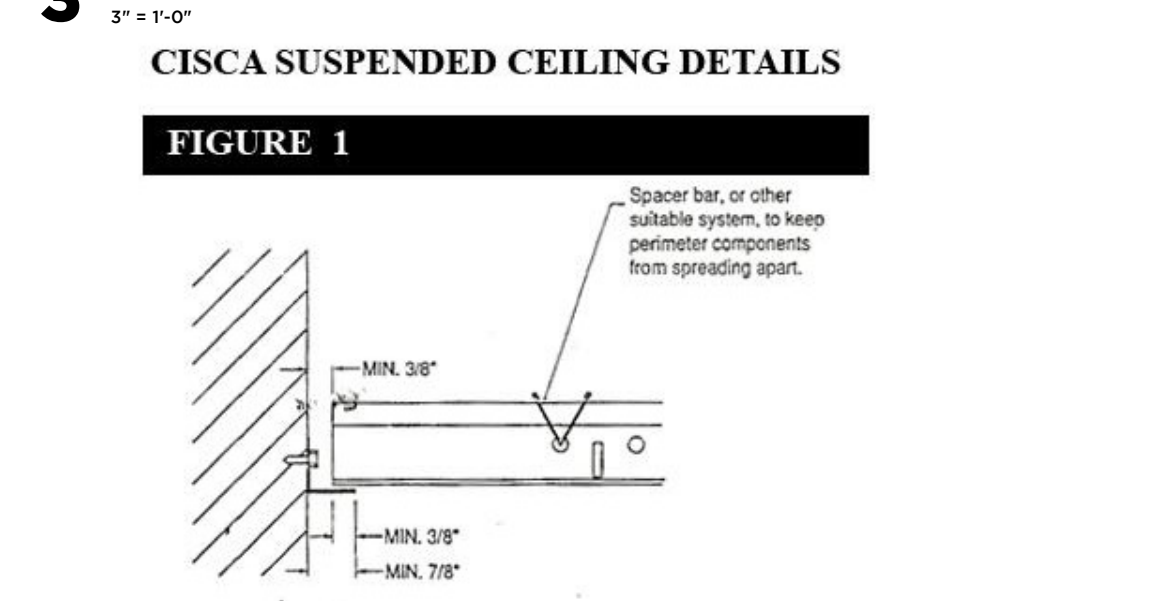
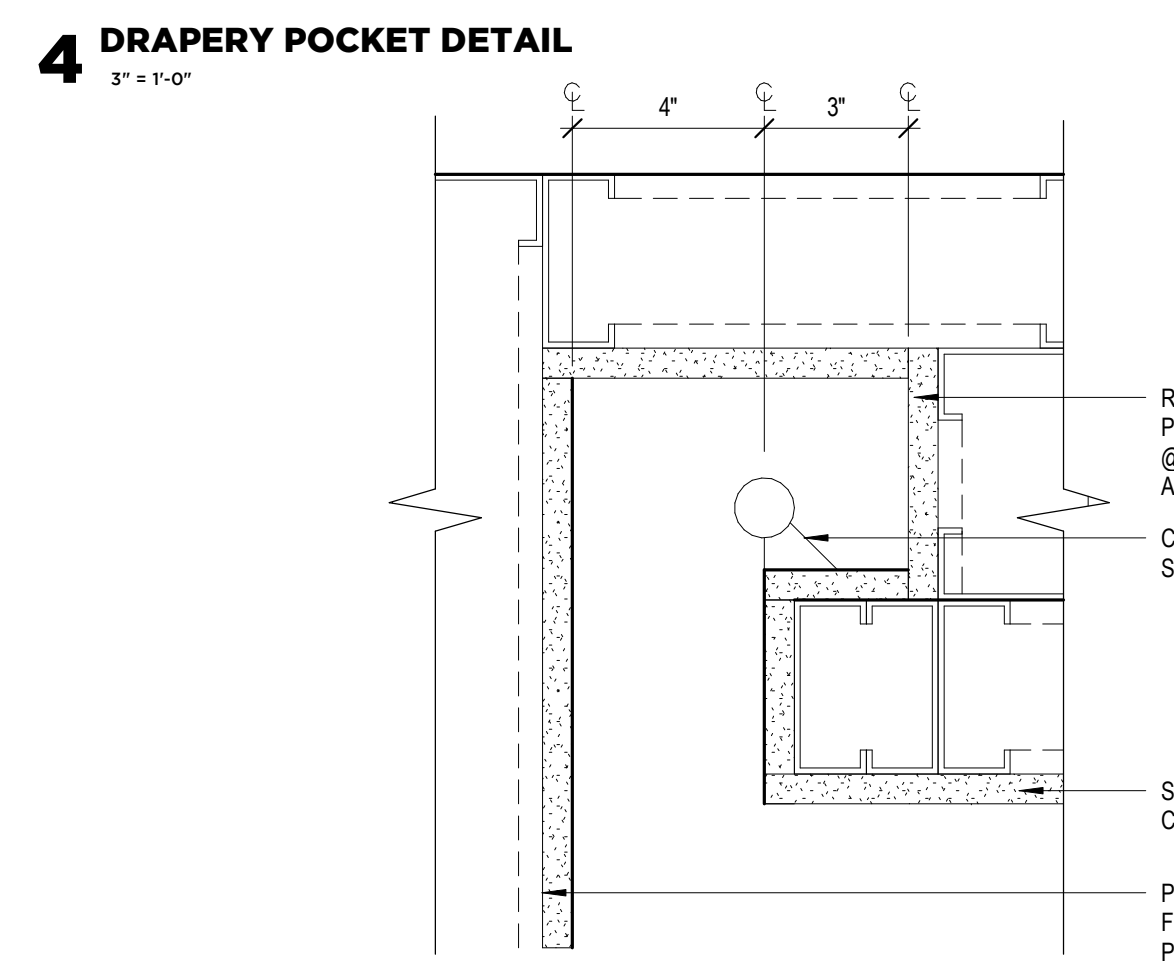
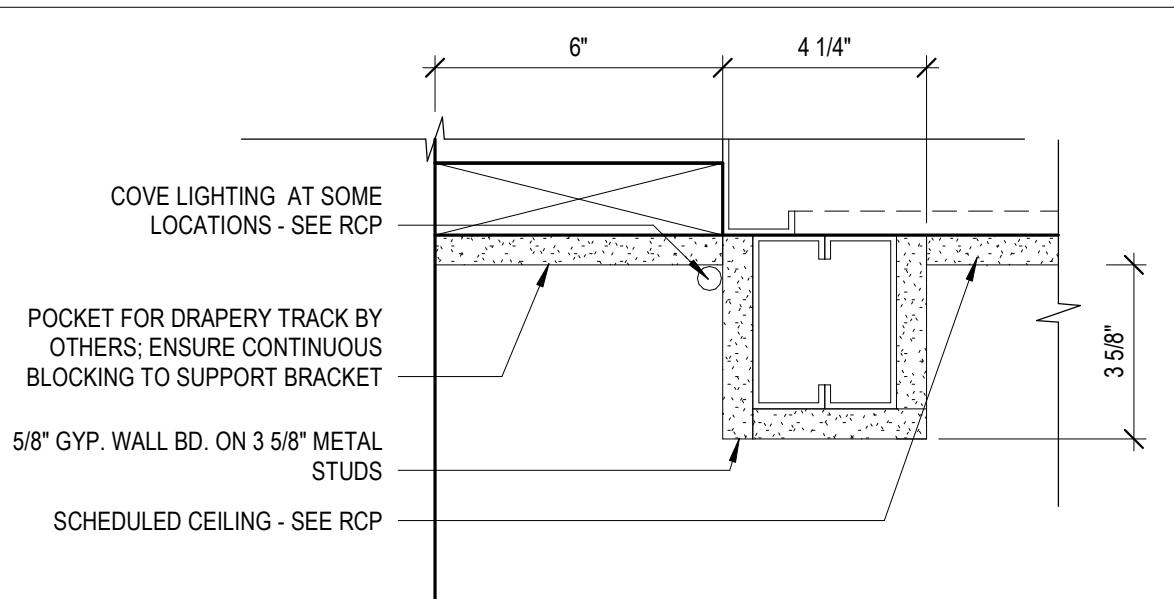
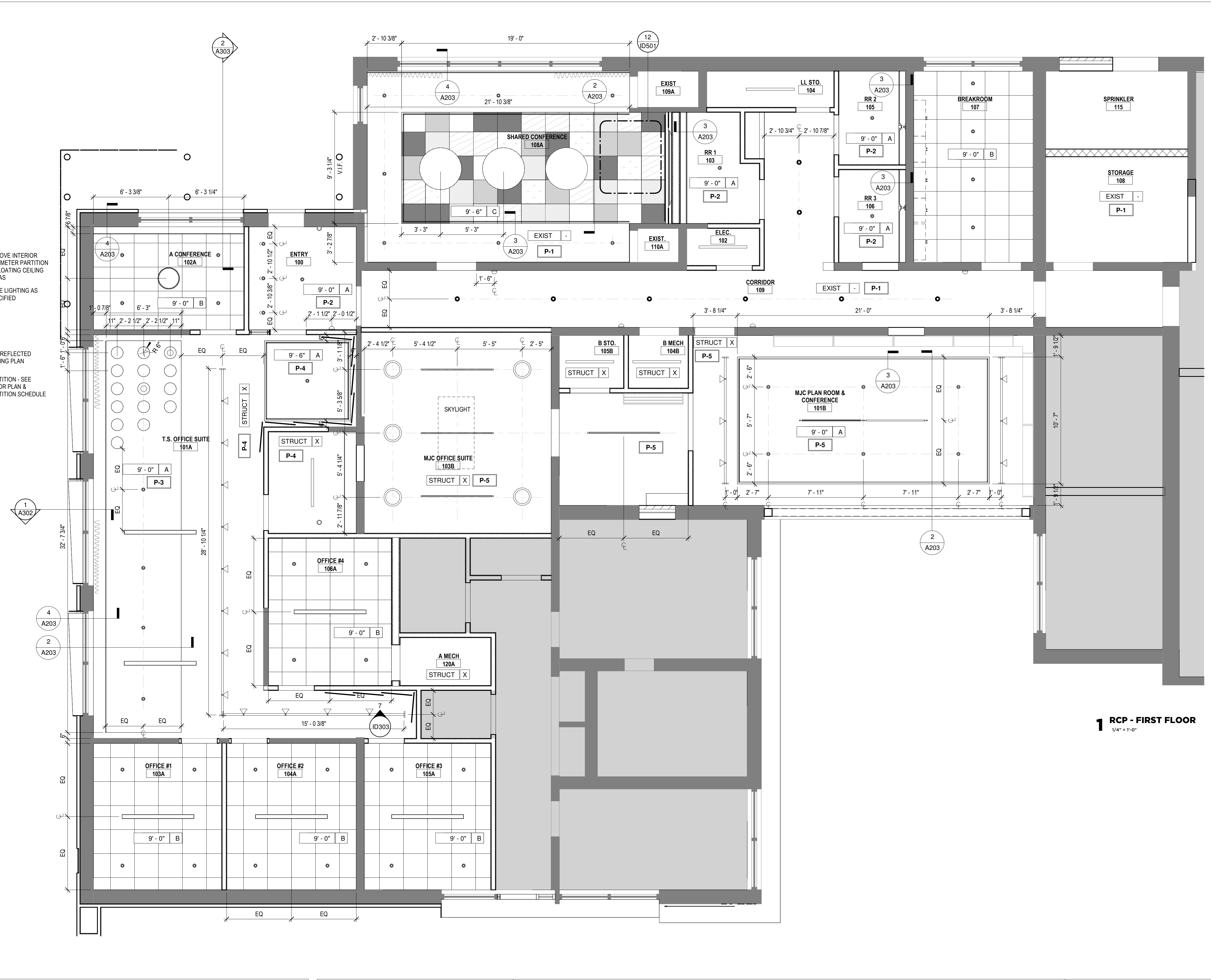
**1167 PACE ST. - PHASE I**  
1167 PACE ST, COVINGTON, GA

**REFLECTED CEILING PLAN**

**A203**

THIS DRAWING AND THE FILE FROM WHICH IT HAS BEEN CREATED ARE AN INSTRUMENT OF SERVICE FOR THIS PROJECT. THESE DOCUMENTS ARE THE SOLE PROPERTY OF THE ARCHITECT, AND ANY USE OF THESE DOCUMENTS FOR PURPOSES OTHER THAN THOSE ASSOCIATED WITH THIS PROJECT IS STRICTLY PROHIBITED.

NOT RELEASED FOR CONSTRUCTION



- CEILING NOTES: REFER TO STRUCT DRAWINGS AND NOTES**
- ATTACH ALL ACT & CEILING FRAMES TO BAR JOIST WITH 12 GA. STEEL SUSPENSION CABLE.
  - ALL INTERIOR PARTITIONS TO EXTEND AND ATTACH TO UNDERSIDE OF EXISTING DECK.
  - PROPOSED DETAILS FOR CEILING INSTALLATION SHALL COMPLY WITH THE FOLLOWING REQUIREMENTS:
    - A. CISCA 0-2 (CEILING & INTERIOR SYSTEMS CONSTRUCTION ASSOCIATION) AND ASCE/SEI 7-05 SECTION 13.5.6.2.1 FOR SEISMIC CATEGORY C STRUCTURES.
    - B. CISCA 3-4 (CEILING & INTERIOR SYSTEMS CONSTRUCTION ASSOCIATION) AND ASCE/SEI 7-05 SECTION 13.5.6.2.2 FOR SEISMIC CATEGORY D STRUCTURES.
    - C. NO ACT GRIDS SHALL CONNECT DIRECTLY TO INTERIOR PARTITIONS-SEE DETAILS ABOVE.

CEILING TO BE INSTALLED TO ACCOMMODATE SEISMIC DESIGN CATEGORY C DESIGN FORCES, AS SPECIFIED IN IBC SECTION 1613.1, ASCE/SEI SECTION 13.5.6. REFER TO STRUCT DRAWINGS AND NOTES

NOTE: INTERIOR PARTITIONS CANNOT CONNECT TO CEILING GRID

**2 SUSPENDED CEILING DETAILS**  
1/4" = 1'-0"

**CEILING FINISH LEGEND**

<b>A</b>	(1) LAYER 5/8" GYPSUM WALL BOARD ON METAL STUDS @ 16" O.C. UNO, PRIME & PAINT TO MATCH FINISH TAG
<b>B</b>	ACOUSTIC CEILING TILE, 24"x24", WHITE; BASIS OF DESIGN: ARMSTRONG ULTIMA W/ 15/16" REGULAR GRID
<b>C</b>	ACOUSTIC FELT & LAMINATE CEILING TILE; SEE GRAPHIC LEGEND
<b>X</b>	EXPOSED STRUCTURE, PAINT STRUCTURE & OTHER CEILING COMPONENTS TO MATCH FINISH TAG

- GENERAL NOTES**
- ALL GYPSUM BOARD AT WET WALL AREAS SHALL BE WATER RESISTANT.
  - INSTALL BLOCKING AT ALL WALL MOUNTED ACCESSORIES, CABINETS, SHELVING, AND OTHER COMPONENTS.
  - CENTER LIGHT FIXTURES IN ROOMS OR DOORWAYS WHERE APPLICABLE U.N.O.
  - DOORS ARE DIMENSIONED TO CENTER OF OPENING & DOORS TO BE INSTALLED 6" OFF FACE OF JAMB TO WALL FRAMING U.N.O.
  - WALLS ARE DIMENSIONED FROM FACE OF FRAMING U.N.O.
  - INSULATION = T-13 @ WALLS AND R-38 @ ROOF

**GRAPHIC LEGEND** SEE ELECTRICAL DRAWINGS FOR COMPLETE LIST AND DETAILS

○	PENDANT LIGHT FIXTURE	—	LINEAR SUSPENDED DECORATIVE LIGHT FIXTURE	•	4" DIA RECESSED WALL WASH CAN LIGHT FIXTURE
○	PENDANT LIGHT FIXTURE	—	LINEAR SUSPENDED LIGHT FIXTURE	•	4" DIA RECESSED CAN LIGHT FIXTURE
○	PENDANT LIGHT FIXTURE	—	SUSPENDED LINEAR SHOP LIGHT FIXTURE	—	CEILING TYPE
○	PENDANT LIGHT FIXTURE	—	TRACK LIGHT FIXTURE	—	HEIGHT AFF — X' - X" Z
⊙	SCONCE LIGHT FIXTURE	—	LINEAR SUSPENDED LIGHT FIXTURE	—	
⊙	SCONCE LIGHT FIXTURE	—	CONTINUOUS COVE LIGHTING	—	

**PARTITION LEGEND**

—	AUTEX COMPOSITION - BEEHIVE
—	AUTEX COMPOSITION - VINTAGE
—	AUTEX COMPOSITION - OCTANE
—	AUTEX COMPOSITION - SARGAZO
—	PLASTIC LAMINATE FORMICA CAMEL ELM NATURAL GRAN TEXTURE
—	AUTEX COMPOSITION - CAVALIER

SEE SECTIONS FOR DETAILS

—	EXISTING PARTITION
—	PARTITION