

#	DATE	TITLE

PROJECT NUMBER:
00-000

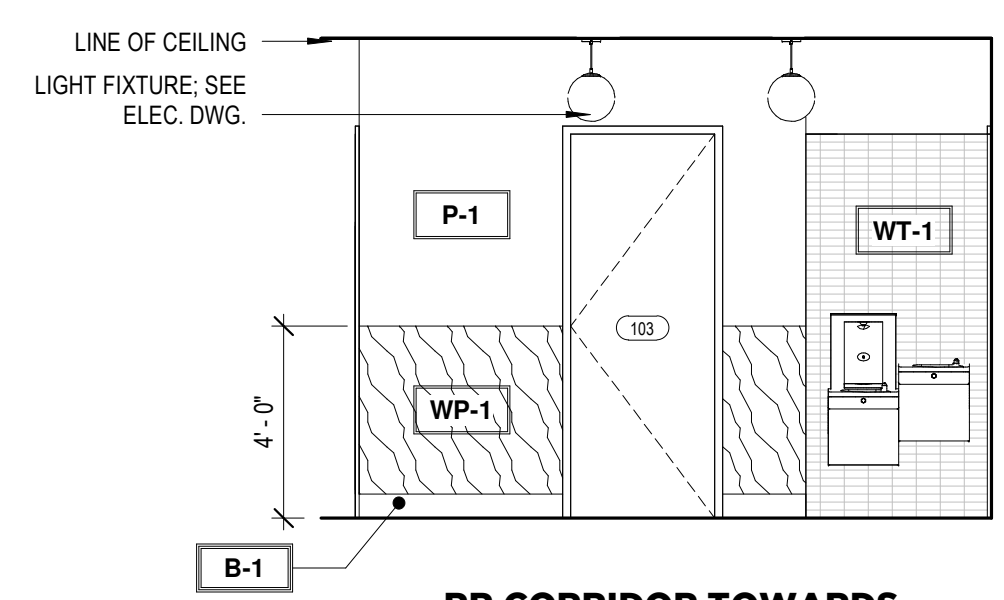
1167 PACE ST. - PHASE I
1167 PACE ST, COVINGTON, GA

AMENITY RESTROOM ELEVATIONS

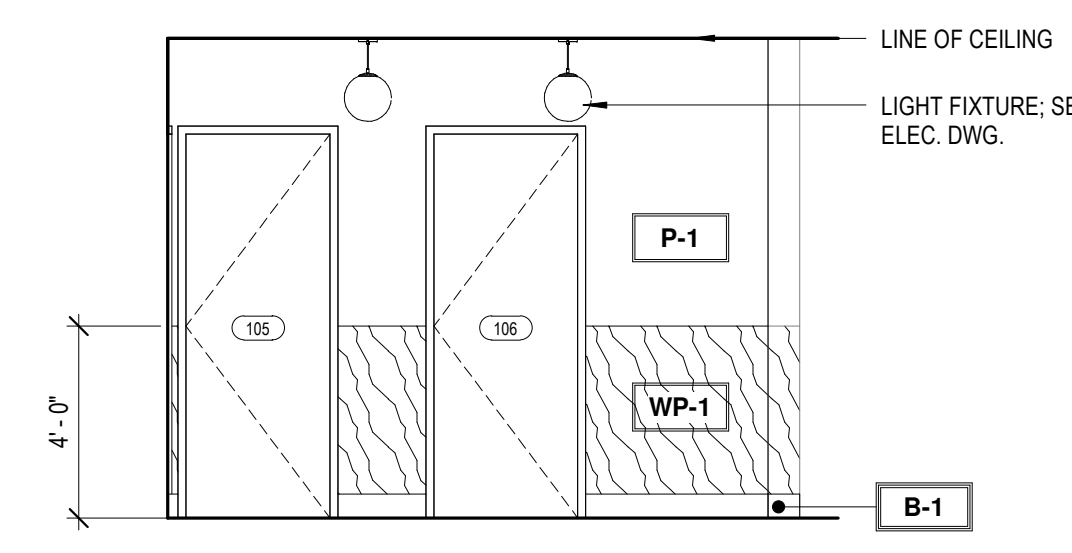
ID302

THIS DRAWING AND THE FILE FROM WHICH IT HAS BEEN CREATED ARE AN INSTRUMENT OF SERVICE FOR THIS PROJECT. THESE DOCUMENTS ARE THE SOLE PROPERTY OF THE ARCHITECT. AND ANY USE OF THESE DOCUMENTS FOR PURPOSES OTHER THAN THOSE ASSOCIATED WITH THIS PROJECT IS STRICTLY PROHIBITED.

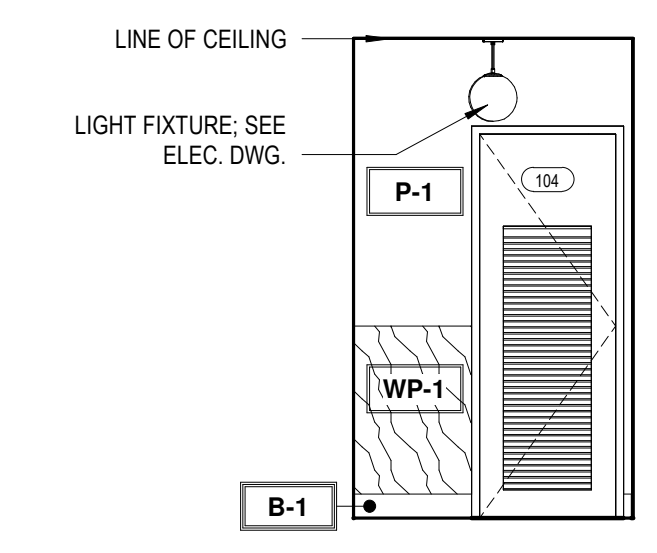
NOT RELEASED FOR CONSTRUCTION



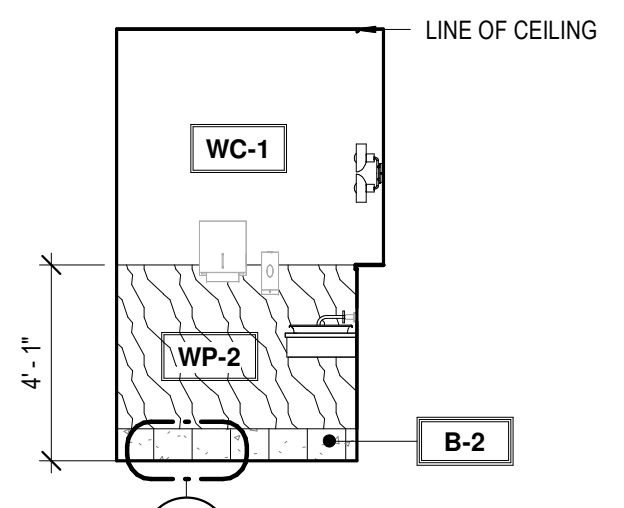
15 RR CORRIDOR TOWARDS WATERCOOLER
1/4" = 1'-0"



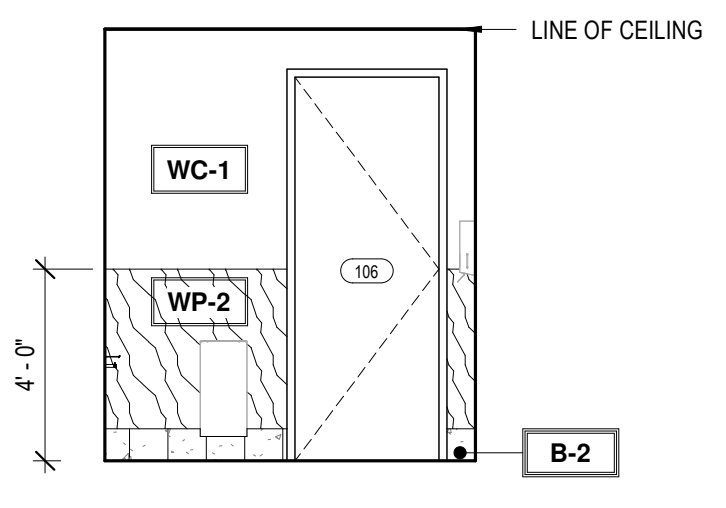
14 RR CORRIDOR TOWARDS RR2 & RR3
1/4" = 1'-0"



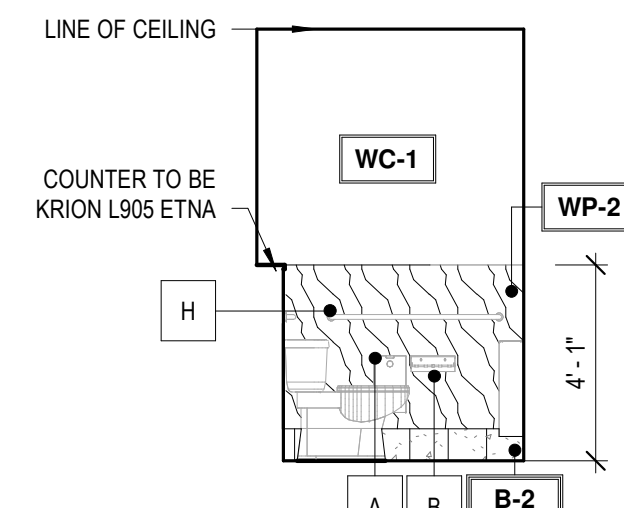
13 RR CORRIDOR TOWARDS JAN.
1/4" = 1'-0"



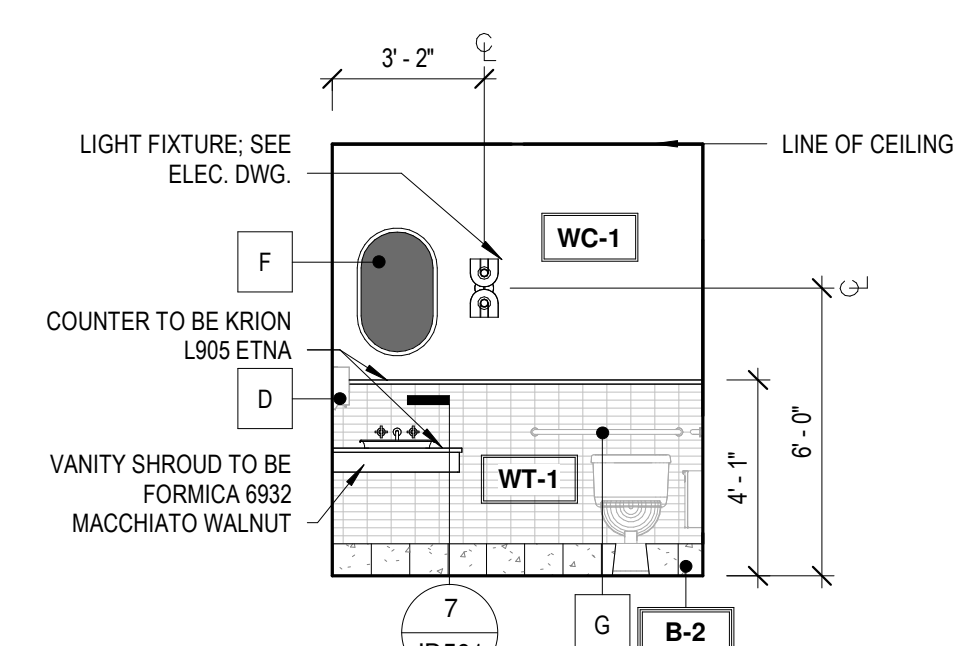
12 RR3 VANITY
1/4" = 1'-0"



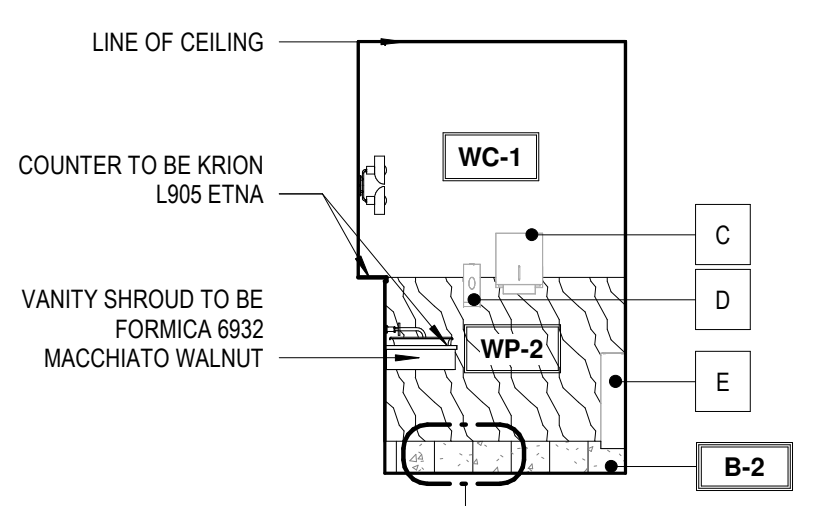
11 RR3 ENTRANCE
1/4" = 1'-0"



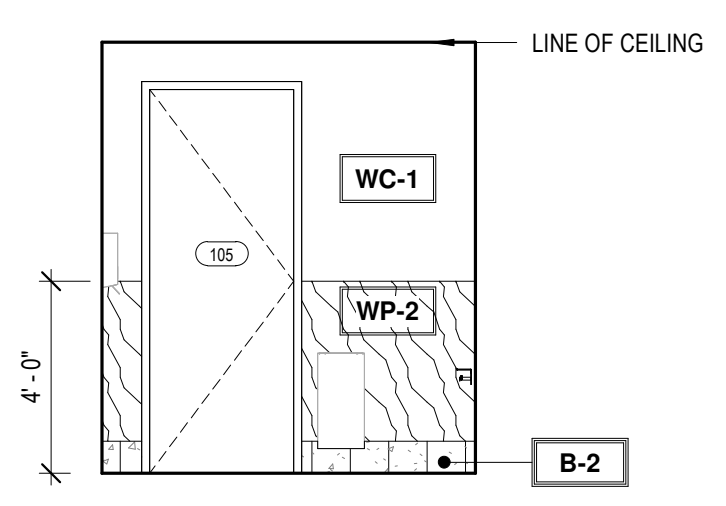
10 RR3 TOILET
1/4" = 1'-0"



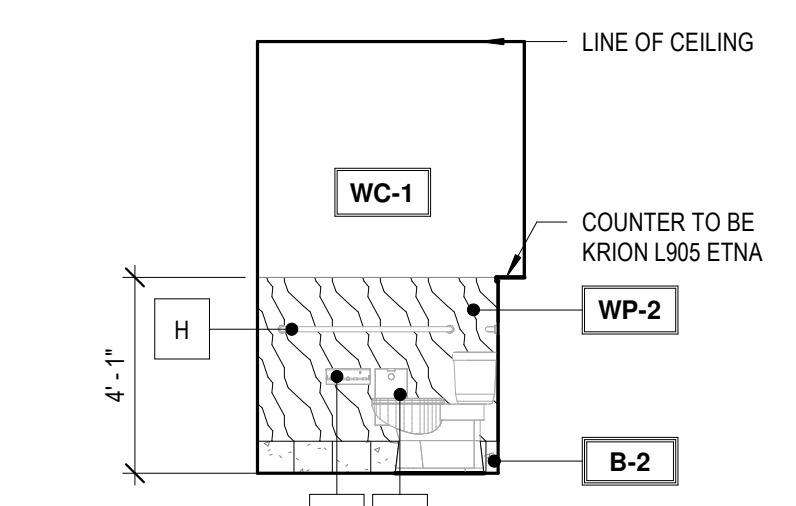
9 RR3 TOWARDS VANITY
1/4" = 1'-0"



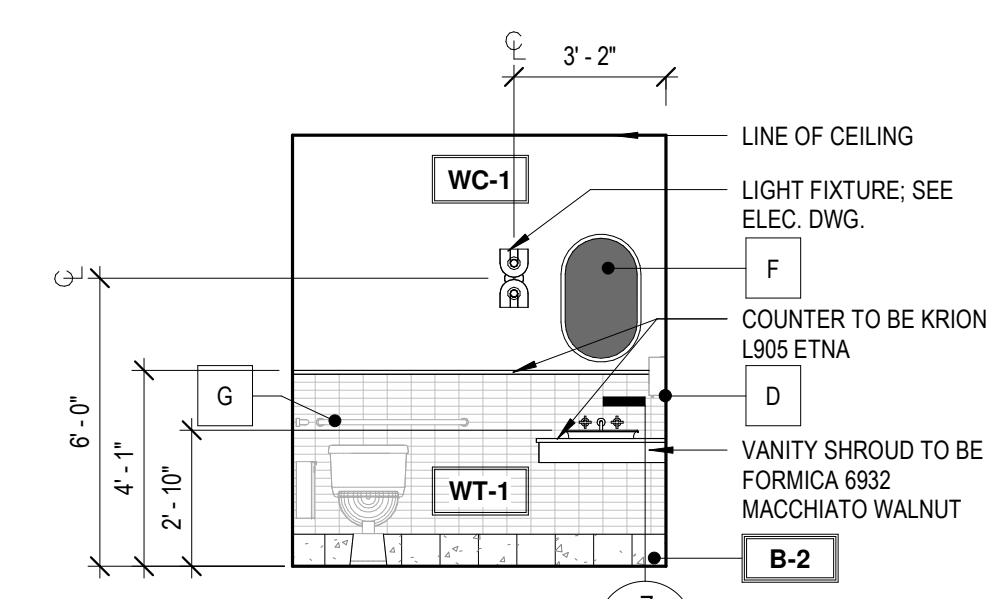
8 RR2 VANITY
1/4" = 1'-0"



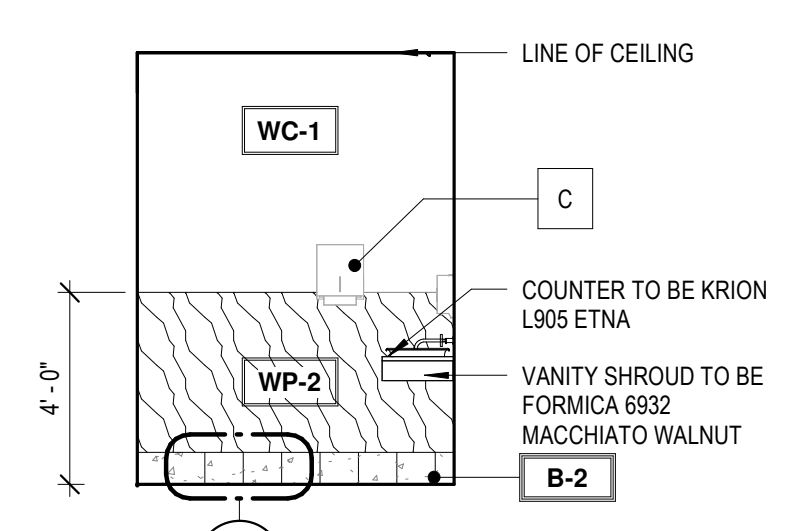
7 RR2 ENTRANCE
1/4" = 1'-0"



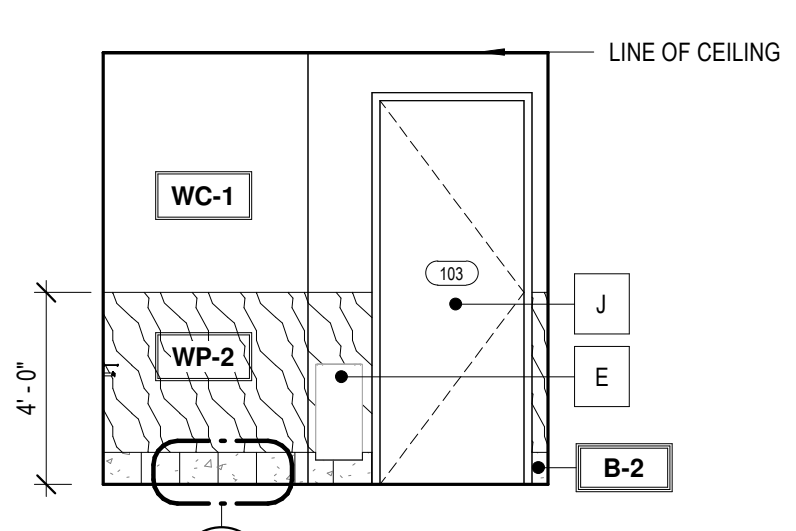
6 RR2 TOILET
1/4" = 1'-0"



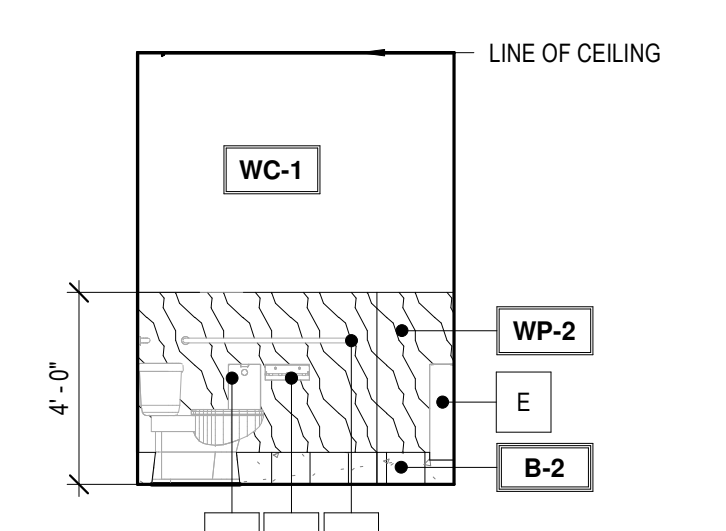
5 RR2 WET WALL
1/4" = 1'-0"



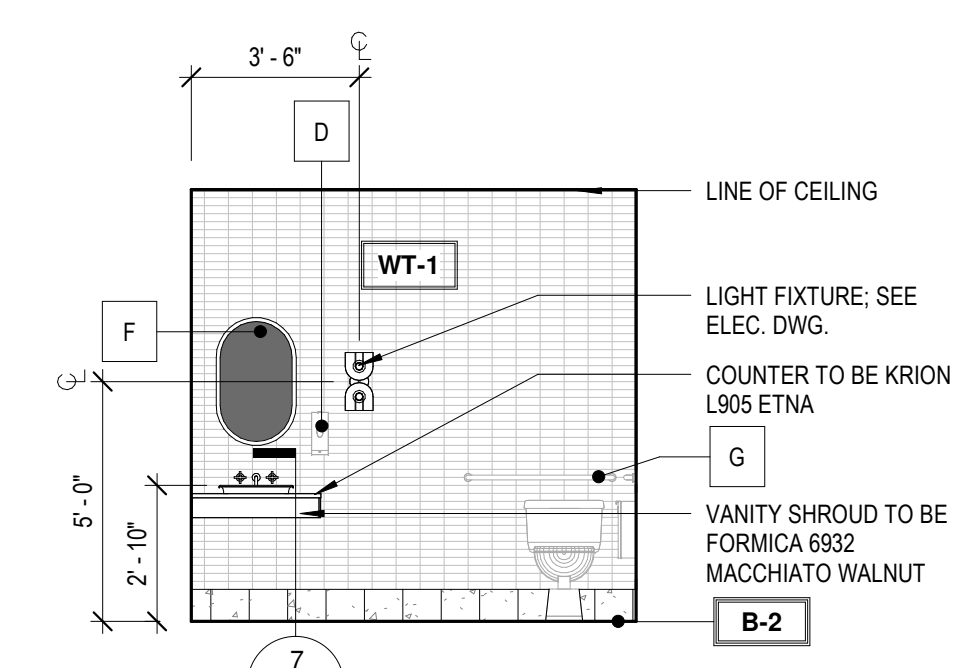
4 RR1 VANITY
1/4" = 1'-0"



3 RR1 ENTRANCE
1/4" = 1'-0"



2 RR1 TOILET
1/4" = 1'-0"



1 RR1 WET WALL
1/4" = 1'-0"

BASE MATERIAL SCHEDULE

Type	PRODUCT NAME	PRODUCT STYLE #	FINISH	MANUFACTURER	CONTACT	DIMENSIONS	GROUT COLOR	GROUT JOINT	GROUT MANUFACTURER	INSTALLATION	NOTES
B-1	RUBBER BASE	CONTOURS NOVEL #45	BLACK BROWN	ROPPE	-	8"	N/A	N/A	N/A		
B-2	TILE BASE	VENEZIANA GRAPHITE & WHITE	POLISHED	TRINITY SURFACES	RACHEL MOORE	8"X8"	TBD	1/16"	TBD	ALTERNATE GRAPHITE & WHITE - SEE DETAIL	INSTALL SCHLUTER DILEX-AHKA IN BRONZE AT TRASITION FROM WALL TO FLOOR
B-3	RUBBER BASE	PINNACLE	139 DEEP NAVY	ROPPE	-	6"	N/A	N/A	N/A		
B-4	WOOD BASE TRIM	RB-9602 SPEED BASE MOULDING	PAINT TO MATCH ADJ.	RANDALL BROTHERS	-	8"	N/A	N/A	N/A		

WALL MATERIAL FINISH SCHEDULE

Type	PRODUCT NAME	PRODUCT STYLE #	FINISH	MANUFACTURER	CONTACT	DIMENSIONS	GROUT COLOR	GROUT JOINT	GROUT MANUFACTURER	INSTALLATION	NOTES
P-1	SW PRQ-MAR 400 ZERO VOC INTERIOR LATEX	SW 9180 AGED WHITE	EGGSHELL U.N.O.	SHERWIN WILLIAMS	N/A	N/A	N/A	N/A	N/A		PROVIDED & INSTALLED BY G.C.
P-2	SW PRQ-MAR 400 ZERO VOC INTERIOR LATEX	SW 7069 IRON ORE	EGGSHELL U.N.O.	SHERWIN WILLIAMS	N/A	N/A	N/A	N/A	N/A		PROVIDED & INSTALLED BY G.C.
P-3	SW PRQ-MAR 400 ZERO VOC INTERIOR LATEX	SW 7012 CREAMY	EGGSHELL U.N.O.	SHERWIN WILLIAMS	N/A	N/A	N/A	N/A	N/A		PROVIDED & INSTALLED BY G.C.
P-4	SW PRQ-MAR 400 ZERO VOC INTERIOR LATEX	SW 9060 CONNORS LAKE	EGGSHELL U.N.O.	SHERWIN WILLIAMS	N/A	N/A	N/A	N/A	N/A		PROVIDED & INSTALLED BY G.C.
P-5	SW PRQ-MAR 400 ZERO VOC INTERIOR LATEX	SW 7531 CANVAS TAN	EGGSHELL U.N.O.	SHERWIN WILLIAMS	N/A	N/A	N/A	N/A	N/A		PROVIDED & INSTALLED BY G.C.
WC-1	ALL ABOUT GEO	ROSE BEIGE	-	MDC INTERIOR SOLUTIONS	-	N/A	N/A	N/A	N/A		PROVIDED & INSTALLED BY G.C.
WC-2	ROMANTIC LANDSCAPE	NEUTRAL	WALL MURAL	PHOTOWALL	-	N/A	N/A	N/A	N/A		PROVIDED & INSTALLED BY G.C.
WP-1	LAMINATE PANELING	5795-NG CAMEL ELM	NATURAL GRAIN	FORMICA	-	N/A	N/A	N/A	N/A	USE FRY REGLET MILLWORK 1/2" REVEAL BW PANELS IN BRONZE; USE MILLWORK FRY REGLET MILLWORK TERMINATION IN BRONZE AT EXPOSED EDGES	PROVIDED & INSTALLED BY G.C.
WP-2	LAMINATE PANELING	6932-NG MACCHIATO WALNUT	NATURAL GRAIN	FORMICA	-	N/A	N/A	N/A	N/A	USE FRY REGLET MILLWORK 1/2" REVEAL BW PANELS IN BRONZE; USE MILLWORK FRY REGLET MILLWORK TERMINATION IN BRONZE AT EXPOSED EDGES	PROVIDED & INSTALLED BY G.C.
WT-1	ARTEFINO ELEMENT	CHARCOAL AR36	MATTE	DALTILE	N/A	N/A	N/A	N/A	N/A	1/2" RUNNING BOND W/ SHORT SIDE PARALLEL TO GROUND	PROVIDED & INSTALLED BY G.C.
WT-2	KAI TRI-STACKED	BLACK	GLOSSY	TILEBAR	EMILY HATCH	1X4"	TBD	TBD	TBD	STACKED W/ SHORT SIDE PARALLEL TO GROUND	PROVIDED & INSTALLED BY G.C.

RESTROOM ACCESSORY SCHEDULE

Letter	DESCRIPTION
A	SURFACE MTD. TOILET TISSUE DISPENSER (BOBRICK B-540.MTBLK)
B	SINGLE SURFACE MOUNTED SANITARY NAPKIN RECEPTACLE (BOBRICK B-35139.MTBLK)
C	SURFACE MOUNTED PAPER TOWEL DISPENSER, MATTE BLACK, 525 MULTIFOLD TOWELS (BOBRICK B-9262.MBLK)
D	SURFACE MOUNTED AUTO LIQUID SOAP DISPENSER, MATTE BLACK (BOBRICK B-2012.MBLK)
E	SURFACE MOUNTED TRASH RECEPTACLE (BOBRICK B-9279.MTBLK)
F	FIXED MIRROR (LUMENS UTTERMOST VARINA MIRROR IN GOLD)
G	36" GRAB BAR (GAMCO B-150C.MTBLK X 36)
H	42" GRAB BAR (GAMCO B-150C.MTBLK X 42)
J	SURFACE MOUNTED ROBE HOOK (FERGUSON SIGNATURE BRILLEE REEDED BRASS)