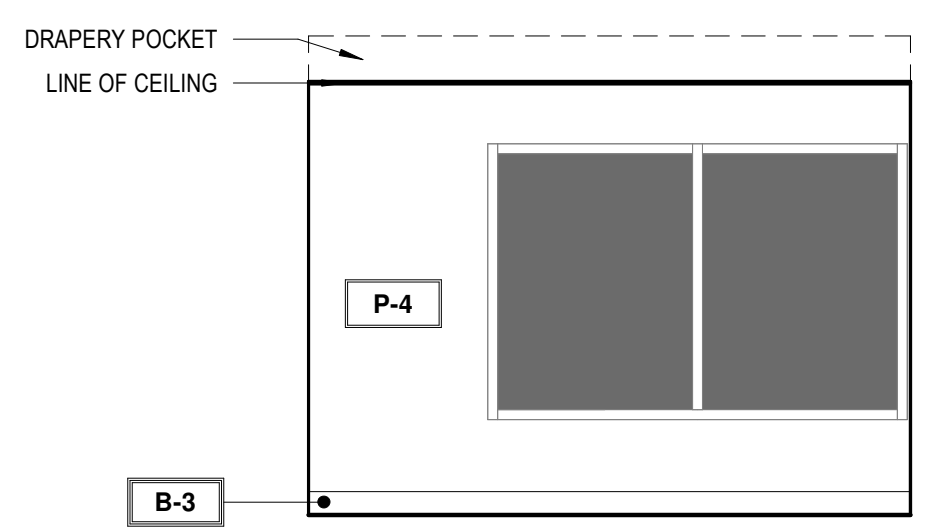
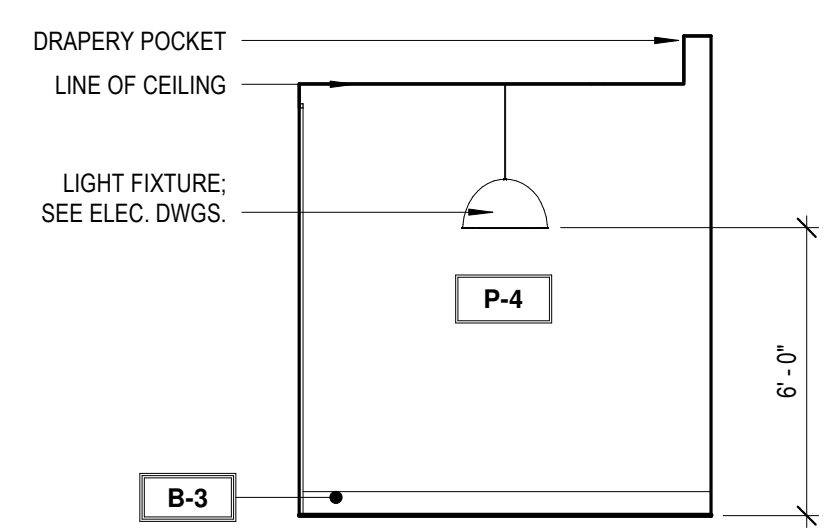


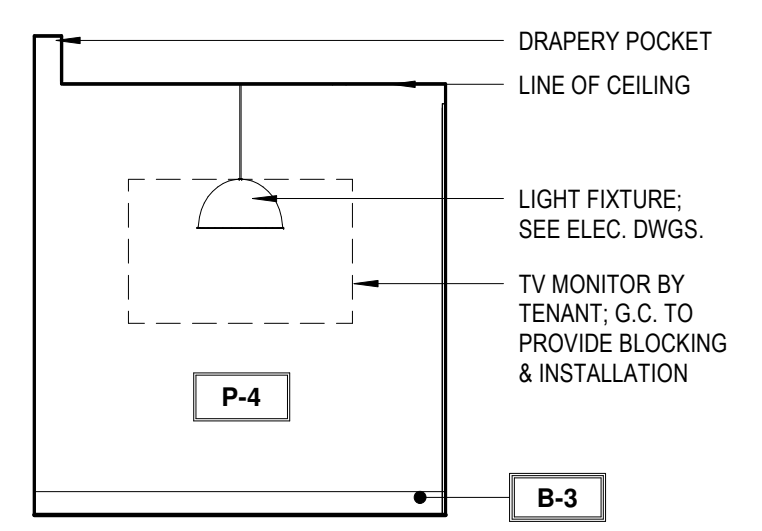
#	DATE	TITLE
PROJECT NUMBER: 00-000		



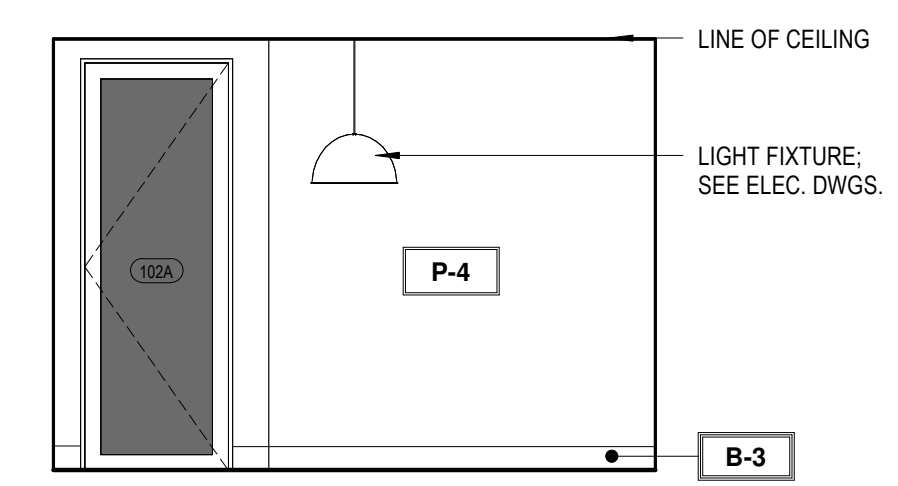
12 CONFERENCE WINDOW
1/4" = 1'-0"



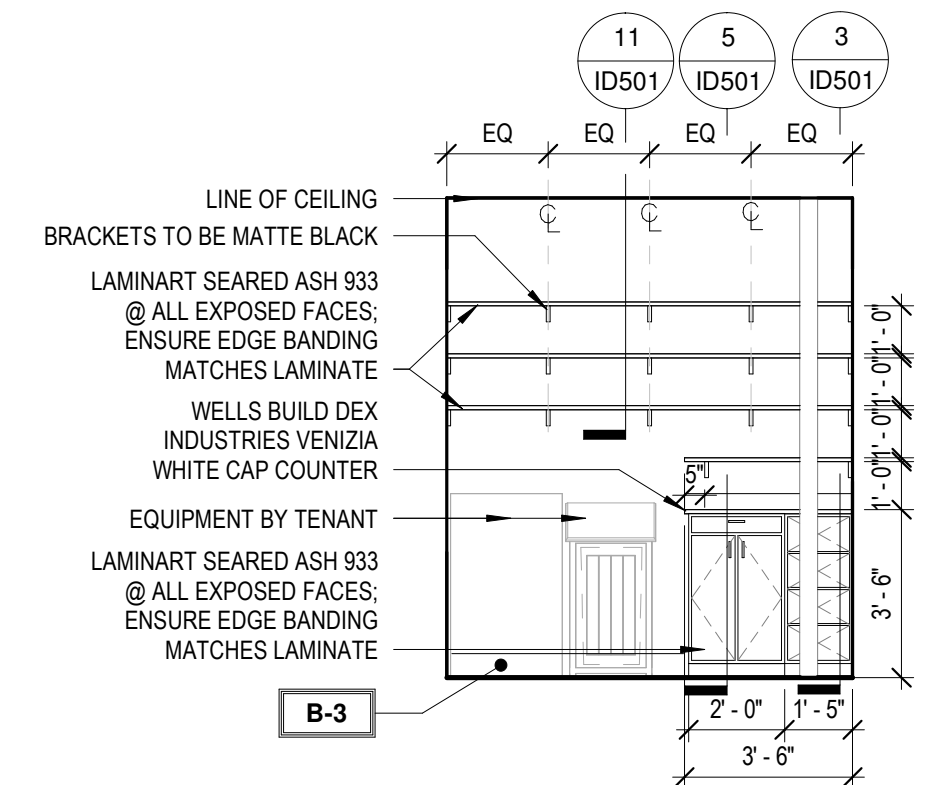
11 CONFERENCE TOWARDS EXTERIOR WALL
1/4" = 1'-0"



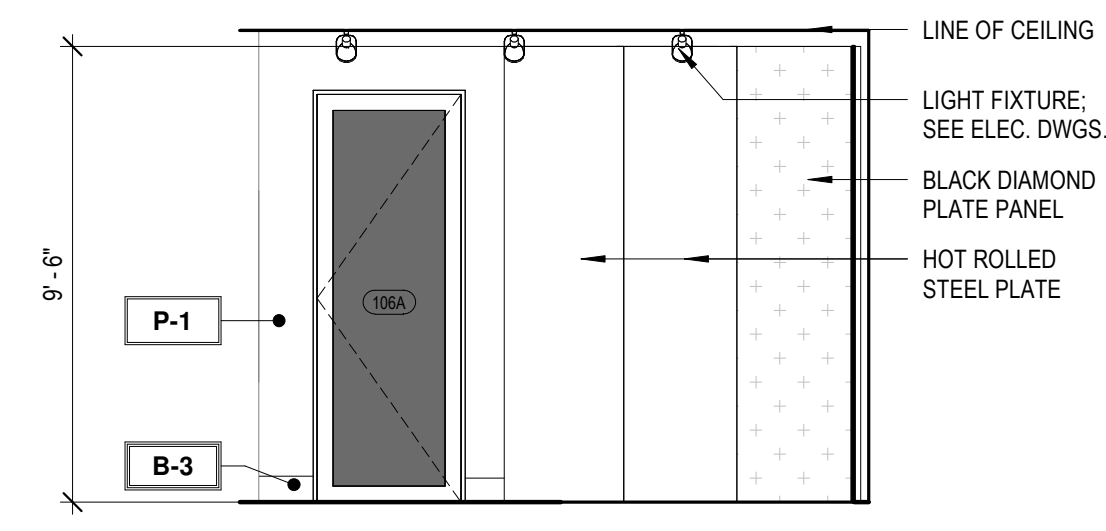
10 CONFERENCE TV
1/4" = 1'-0"



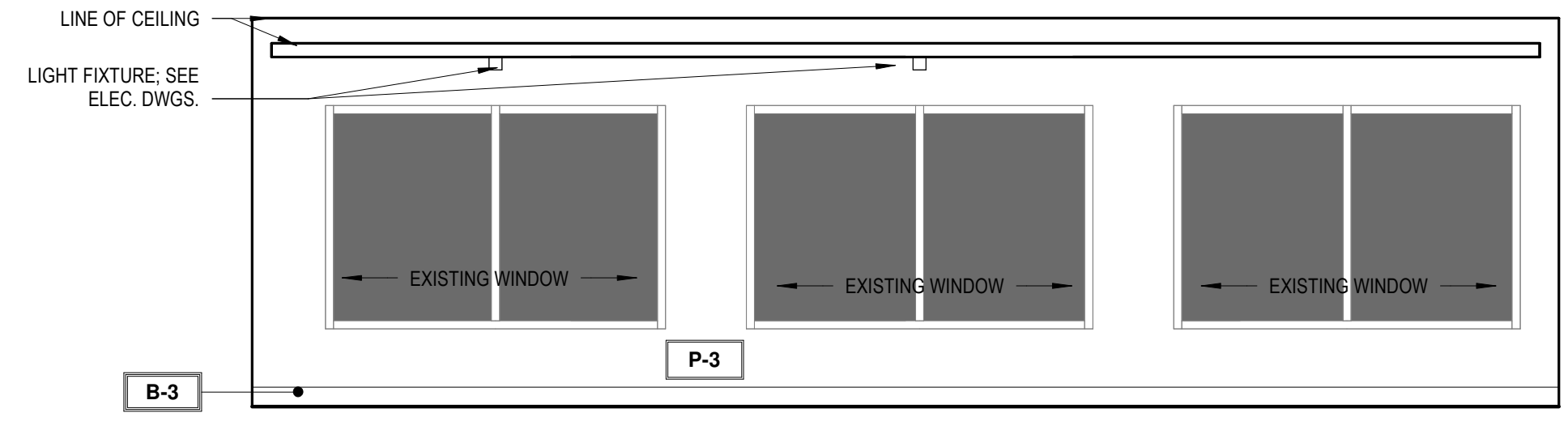
9 CONFERENCE ENTRANCE
1/4" = 1'-0"



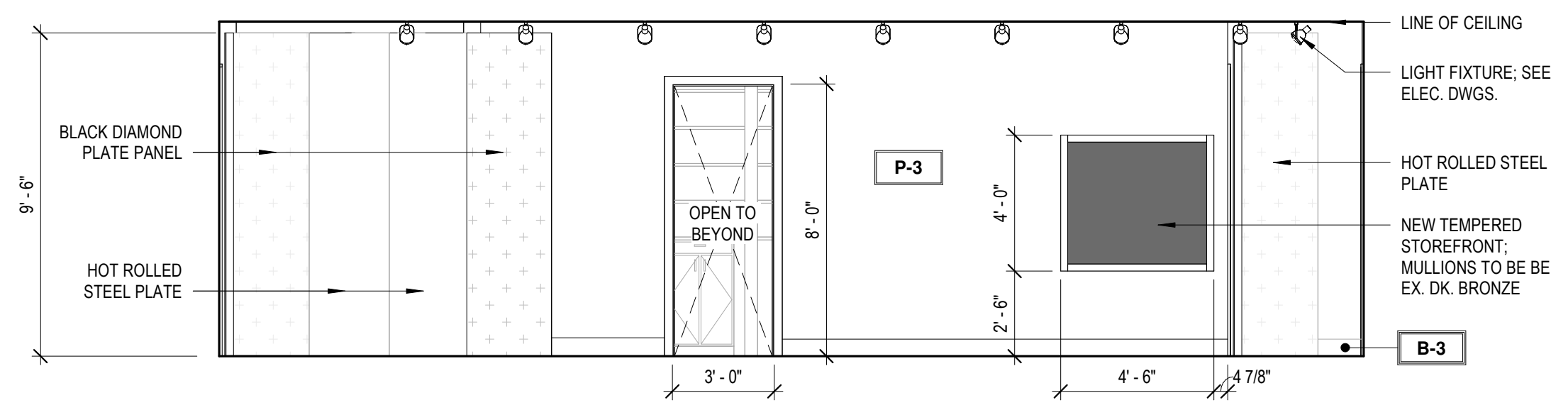
8 PAPER STATION
1/4" = 1'-0"



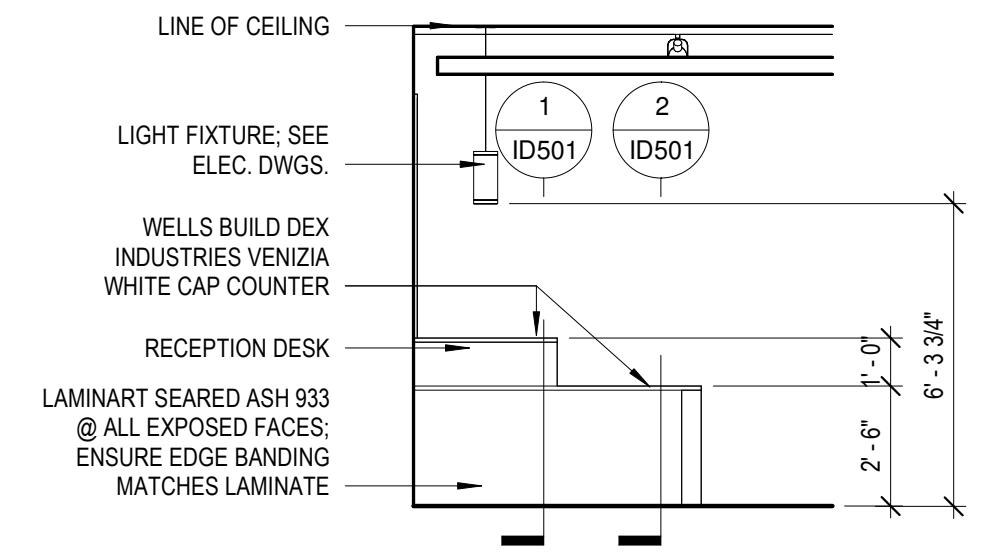
7 STEEL @ HALL
1/4" = 1'-0"



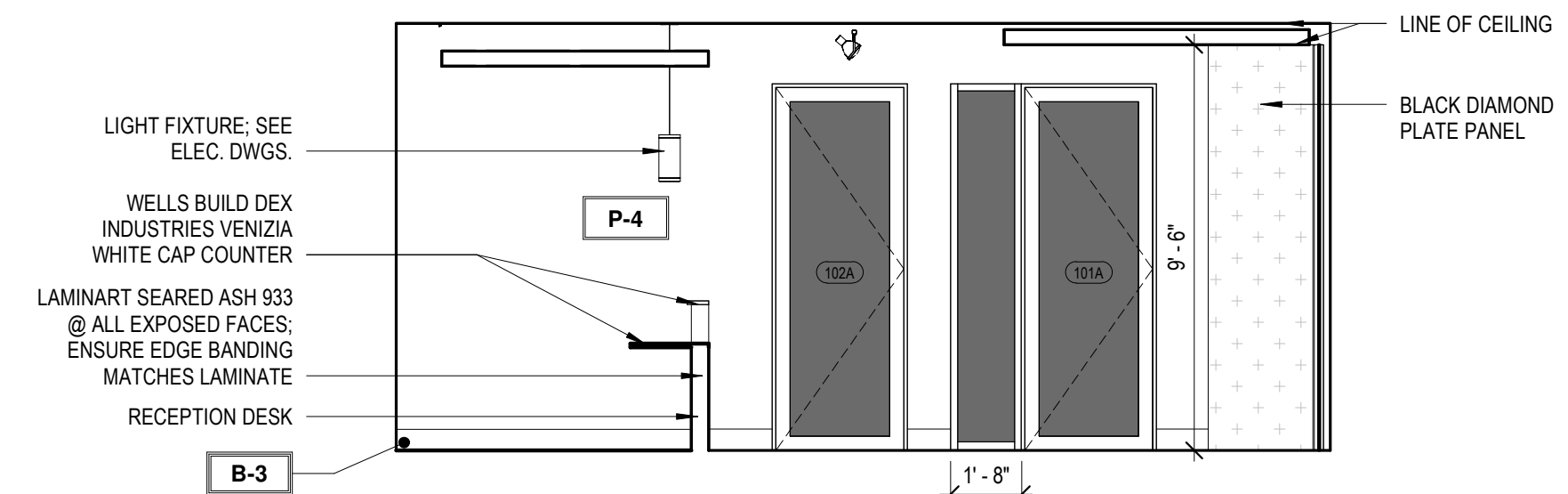
6 WINDOW WALL
1/4" = 1'-0"



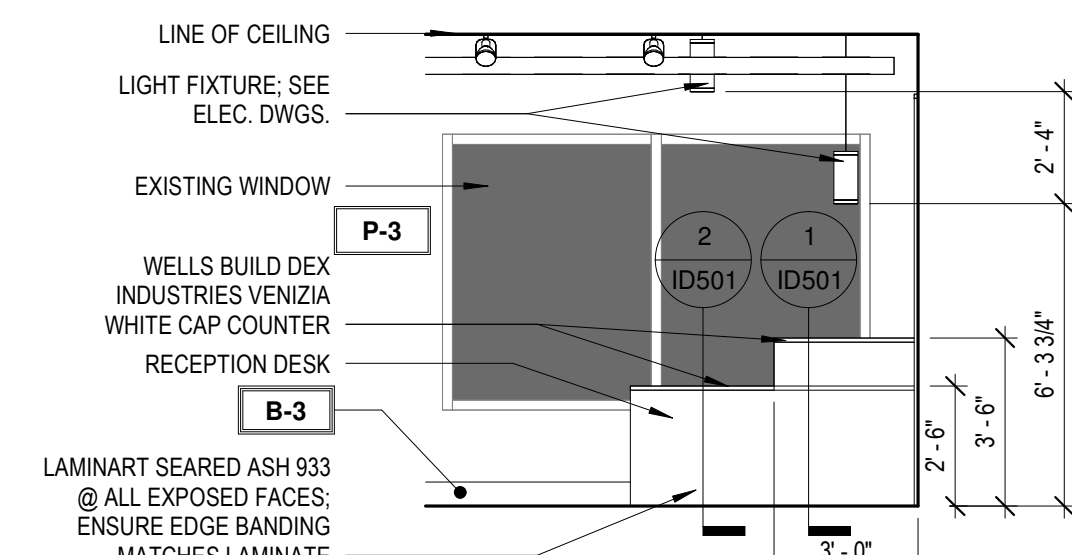
5 ENTRANCE / PRINT
1/4" = 1'-0"



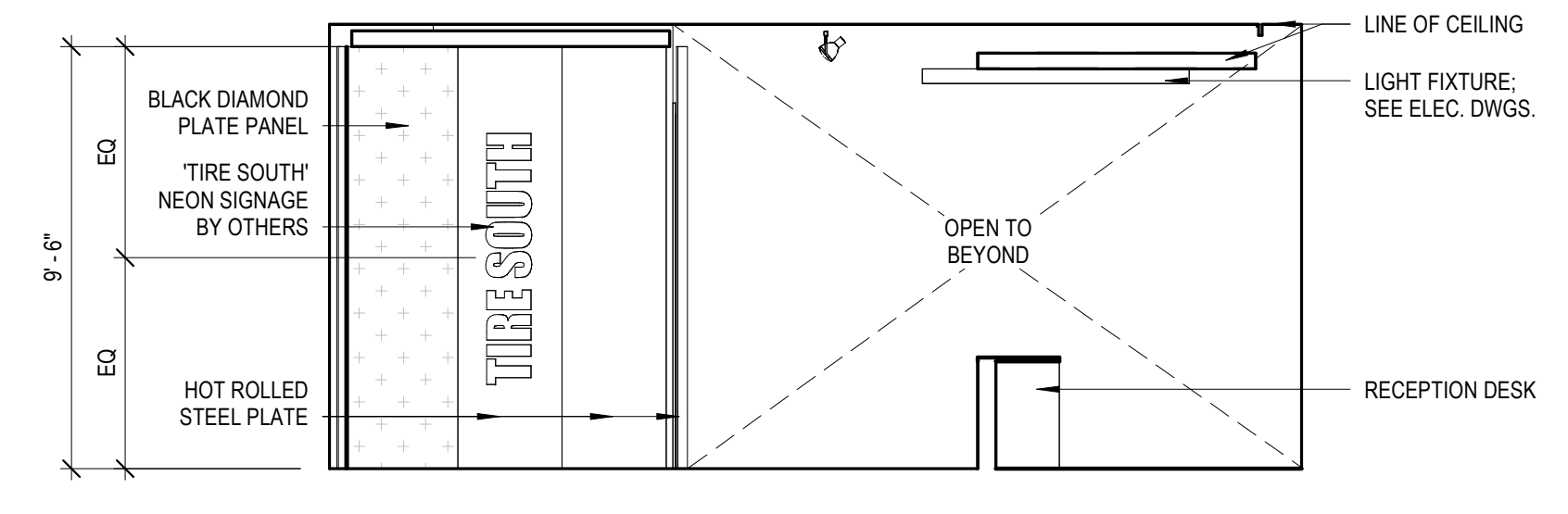
4 RECEPTION DESK BACK
1/4" = 1'-0"



3 RECEPTION DESK SIDE
1/4" = 1'-0"



2 RECEPTION DESK FRONT
1/4" = 1'-0"



1 ENTRANCE SIGNAGE
1/4" = 1'-0"

BASE MATERIAL SCHEDULE

Type	PRODUCT NAME	PRODUCT STYLE #	FINISH	MANUFACTURER	CONTACT	DIMENSIONS	GROUT COLOR	GROUT JOINT	GROUT MANUFACTURER	INSTALLATION	NOTES
B-1	RUBBER BASE	CONTOURS NOVEL #45	BLACK BROWN	ROPPE	-	8"	N/A	N/A	N/A		
B-2	TILE BASE	VENEZIANA GRAPHITE & WHITE	POLISHED	TRINITY SURFACES	RACHEL MOORE	8"X8"	TBD	1/16"	TBD	ALTERNATE GRAPHITE & WHITE - SEE DETAIL	INSTALL SCHLUTER DILEX-AHKA IN BRONZE AT TRASITION FROM WALL TO FLOOR
B-3	RUBBER BASE	PINNACLE	139 DEEP NAVY	ROPPE	-	6"	N/A	N/A	N/A		
B-4	WOOD BASE TRIM	RB-9602 SPEED BASE MOULDING	PAINT TO MATCH ADJ.	RANDALL BROTHERS	-	8"	N/A	N/A	N/A		

WALL MATERIAL FINISH SCHEDULE

Type	PRODUCT NAME	PRODUCT STYLE #	FINISH	MANUFACTURER	CONTACT	DIMENSIONS	GROUT COLOR	GROUT JOINT	GROUT MANUFACTURER	INSTALLATION	NOTES
P-1	SW PRO-MAR 400 ZERO VOC INTERIOR LATEX	SW 9180 AGED WHITE	EGGSHELL U.N.O.	SHERWIN WILLIAMS	N/A	N/A	N/A	N/A	N/A		PROVIDED & INSTALLED BY G.C.
P-2	SW PRO-MAR 400 ZERO VOC INTERIOR LATEX	SW 7069 IRON ORE	EGGSHELL U.N.O.	SHERWIN WILLIAMS	N/A	N/A	N/A	N/A	N/A		PROVIDED & INSTALLED BY G.C.
P-3	SW PRO-MAR 400 ZERO VOC INTERIOR LATEX	SW 7012 CREAMY	EGGSHELL U.N.O.	SHERWIN WILLIAMS	N/A	N/A	N/A	N/A	N/A		PROVIDED & INSTALLED BY G.C.
P-4	SW PRO-MAR 400 ZERO VOC INTERIOR LATEX	SW 9060 CONNORS LAKE	EGGSHELL U.N.O.	SHERWIN WILLIAMS	N/A	N/A	N/A	N/A	N/A		PROVIDED & INSTALLED BY G.C.
P-5	SW PRO-MAR 400 ZERO VOC INTERIOR LATEX	SW 7531 CANVAS TAN	EGGSHELL U.N.O.	SHERWIN WILLIAMS	N/A	N/A	N/A	N/A	N/A		PROVIDED & INSTALLED BY G.C.
WC-1	ALL ABOUT GEO	ROSE BEIGE	-	MDC INTERIOR SOLUTIONS	-	N/A	N/A	N/A	N/A		PROVIDED & INSTALLED BY G.C.
WC-2	ROMANTIC LANDSCAPE	NEUTRAL	WALL MURAL	PHOTOWALL	-	N/A	N/A	N/A	N/A		PROVIDED & INSTALLED BY G.C.
WP-1	LAMINATE PANELING	5795-NG CAMEL ELM	NATURAL GRAIN	FORMICA	-	N/A	N/A	N/A	N/A	USE FRY REGLET MILLWORK 1/2" REVEAL B/W PANELS IN BRONZE; USE MILLWORK FRY REGLET MILLWORK TERMINATION IN BRONZE AT EXPOSED EDGES	PROVIDED & INSTALLED BY G.C.
WP-2	LAMINATE PANELING	6932-NG MACCHIATO WALNUT	NATURAL GRAIN	FORMICA	-	N/A	N/A	N/A	N/A	USE FRY REGLET MILLWORK 1/2" REVEAL B/W PANELS IN BRONZE; USE MILLWORK FRY REGLET MILLWORK TERMINATION IN BRONZE AT EXPOSED EDGES	PROVIDED & INSTALLED BY G.C.
WT-1	ARTEFINO ELEMENT	CHARCOAL AR36	MATTE	DALTILE	N/A	N/A	N/A	N/A	N/A	1/2 RUNNING BOND W/ SHORT SIDE PARALLEL TO GROUND	PROVIDED & INSTALLED BY G.C.
WT-2	XAI TRI-STACKED	BLACK	GLOSSY	TILEBAR	EMILY HATCH	1X4"	TBD	TBD	TBD	STACKED W/ SHORT SIDE PARALLEL TO GROUND	PROVIDED & INSTALLED BY G.C.

NOT