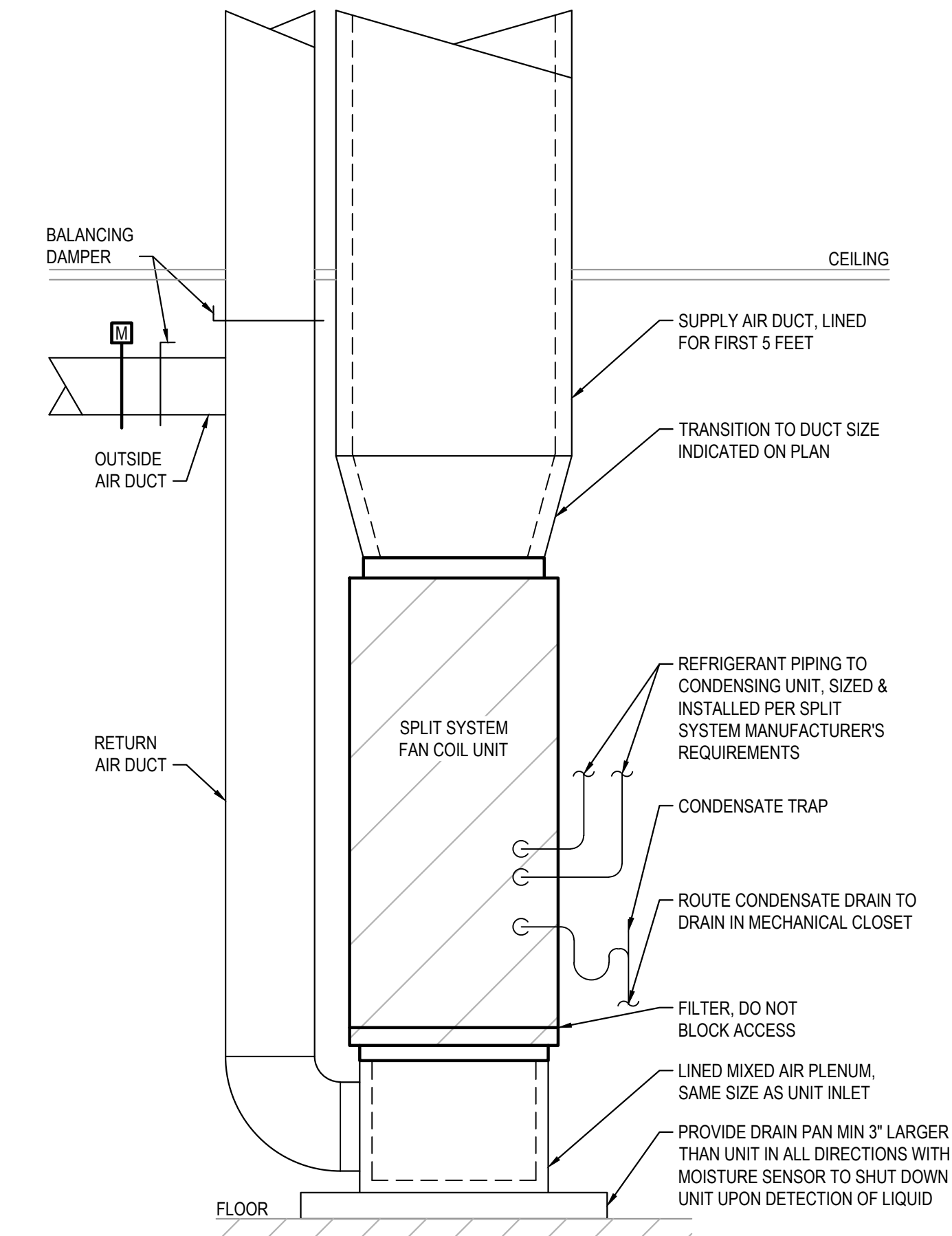


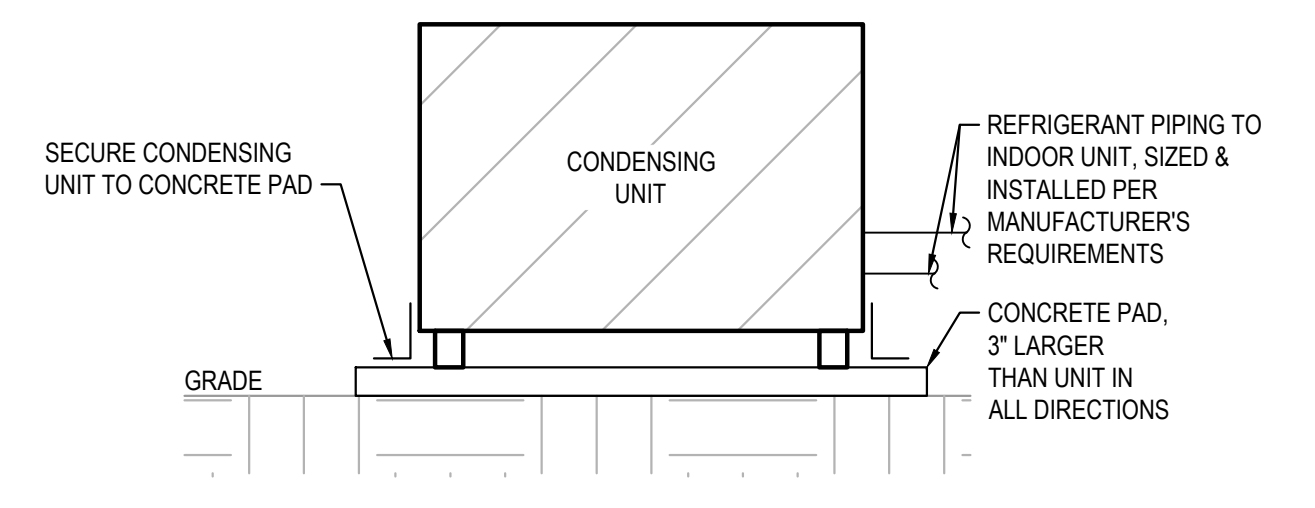
LEGEND		
TAG	SYMBOL	DESCRIPTION
A/C		ABOVE CEILING
AHU		AIR HANDLER
BDD		BACKDRAFT DAMPER
B/F		BELOW FLOOR
CD	☒	CEILING DIFFUSER
CWS&R		CONDENSER WATER SUPPLY & RETURN
CFM		CUBIC FOOT PER MIN.
DB		DRY BULB
EXIST.	---	EXISTING DUCT / PIPE
EAT		ENTERING AIR TEMPERATURE
EWT		ENTERING WATER TEMPERATURE
EF		EXHAUST FAN
ER	☒	EXHAUST REGISTER
ESP		EXTERNAL STATIC PRESSURE
FD	▼	FIRE DAMPER
FISD	▼	COMBINATION FIRE & SMOKE DAMPER
	◆	VERTICAL FIRE DAMPER
	◆	VERTICAL COMBINATION FIRE & SMOKE DAMPER
HP		HORSEPOWER
LAT		LEAVING AIR TEMPERATURE
LWT		LEAVING WATER TEMPERATURE
MD		MANUAL DAMPER
	☒	MOTOR OPERATED DAMPER
OA		OUTSIDE AIR
RA		RETURN AIR
RAG	☒	RETURN AIR GRILLE
SA		SUPPLY AIR
SR		SUPPLY REGISTER
	⊕	THERMOSTAT
	⊗	BALL VALVE
WSHP		WATER SOURCE HEAT PUMP

**GENERAL NOTES:**

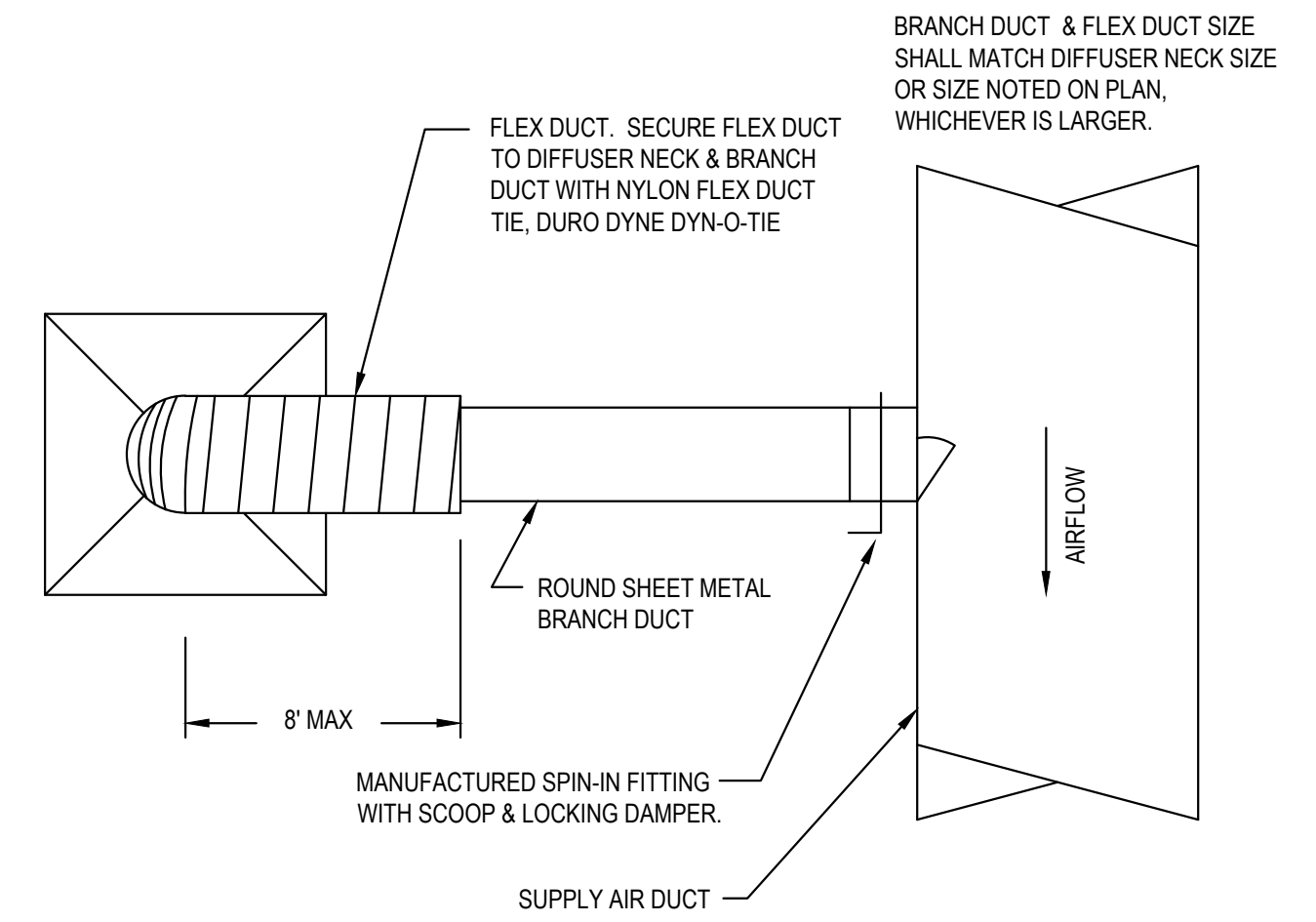
- DRAWINGS ARE SCHEMATIC IN NATURE. CONTRACTOR SHALL PROVIDE ALL MATERIALS, EQUIPMENT, TOOLS AND LABOR NECESSARY TO PROVIDE A COMPLETE MECHANICAL SYSTEM COMPLIANT WITH ALL REQUIRED CODES & STANDARDS.
- CONTRACTOR SHALL VISIT THE SITE TO THOROUGHLY EXAMINE EXISTING CONDITIONS PRIOR TO SUBMITTING BID. IF EXISTING CONDITIONS DIFFER FROM DESIGN DOCUMENTS IN SUCH A MANNER THAT AFFECTS PRICING, THE CONTRACTOR SHALL ADJUST THE BID ACCORDINGLY AND NOTIFY THE OWNER & ENGINEER PRIOR TO SUBMITTING THE BID. NO ALLOWANCES WILL BE MADE FOR LACK OF KNOWLEDGE REGARDING THE EXISTING CONDITIONS.
- TEST AND BALANCE ALL MECHANICAL EQUIPMENT, AIR DISTRIBUTION DEVICES, ETC. TO THE CONDITIONS INDICATED ON THE FLOOR PLANS AND SCHEDULES. A COPY OF THE REPORT SHALL BE SUBMITTED TO THE OWNER. TEST AND BALANCE AGENCY SHALL BE NEBB OR AABC CERTIFIED.
- ALL CONTROL WORK SHALL BE COMPLETED BY A BASE BUILDING APPROVED CONTRACTOR AND SHALL TIE INTO THE BASE BUILDING ENERGY MANAGEMENT SYSTEM. NEW CONTROL COMPONENTS SHALL BE OF THE SAME MANUFACTURER AS THE EXISTING BUILDING SYSTEM, NO EXCEPTIONS. GRAPHICS SHALL BE UPDATED TO REFLECT ALL RELOCATED & NEW EQUIPMENT. ALL MATERIAL, LABOR AND PROGRAMMING SHALL BE INCLUDED AS A PART OF THIS CONTRACT.
- ALL LOW VOLTAGE CONTROL WIRING SHALL BE INSTALLED AND WIRED TO EQUIPMENT AS A PART OF THIS CONTRACT.



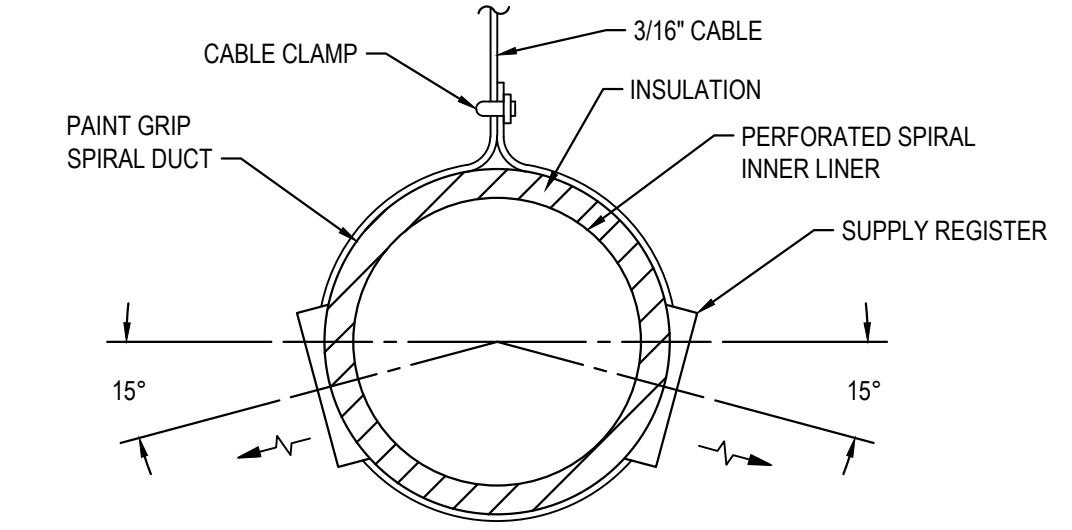
**4 VERTICAL FAN COIL UNIT DETAIL**  
M001 SCALE: N.T.S.



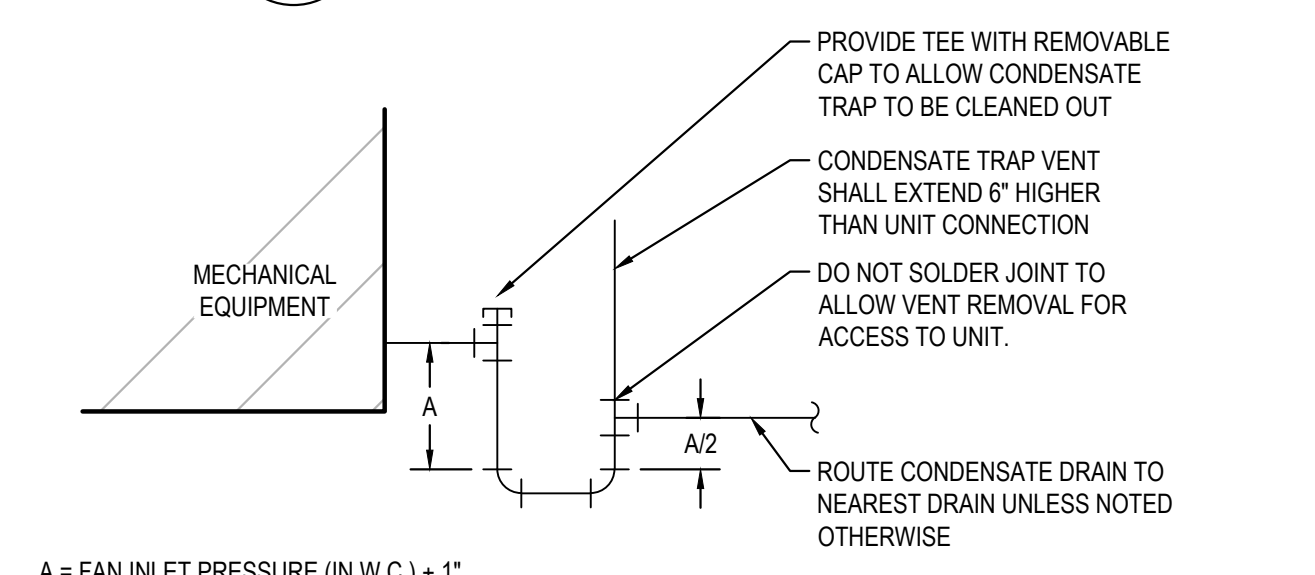
**5 CONDENSING UNIT ON GRADE DETAIL**  
M001 SCALE: N.T.S.



**1 DIFFUSER CONNECTION DETAIL**  
M001 SCALE: N.T.S.



**2 SPIRAL DUCT DIFFUSER DETAIL**  
M001 SCALE: N.T.S.



**3 DRAW-THRU CONDENSATE TRAP DETAIL**  
M001 SCALE: N.T.S.

AIR DISTRIBUTION SCHEDULE		
TAG	DESCRIPTION	BASIS OF DESIGN
CD	CEILING SUPPLY DIFFUSERS (CD) SHALL BE ALUMINUM, STAMPED LOUVERED DIFFUSER WITH 3 ADJUSTABLE CONES. FACE AREA SHALL BE SUITABLE FOR 24"x24" LAY-IN CEILING GRID. PROVIDE WITH BAKED ENAMEL FINISH IN A COLOR MATCHING THE CEILING GRID.	TITUS TMS-AA
LSD	LINEAR SLOT DIFFUSERS (LSD) SHALL BE CONTINUOUS ALUMINUM DIFFUSER WITH LENGTH AS INDICATED ON DRAWINGS. DIFFUSER SHALL HAVE TWO (2) 1" SLOTS WITH TYPE 22, TAPE & SPACKLE BORDER, 180° ADJUSTABLE PATTERN CONTROLLERS AND LINED PLENUM. PLENUM SHALL HAVE NECK SIZE AS INDICATED ON PLAN. DIFFUSER FINISH SHALL BE READY FOR FIELD APPLIED PAINT.	TITUS ML-39
SR	SUPPLY REGISTERS (SR) SHALL BE STEEL, DOUBLE DEFLECTION TYPE PROVIDED WITH OPPOSED BLADE DAMPER AND OUTER MOST SET OF DEFLECTORS PARALLEL TO THE SHORT DIMENSION. PROVIDE WITH OPPOSED BLADE BALANCING DAMPER AND FACTORY APPLIED, WHITE, BAKED ENAMEL FINISH.	TITUS 300RS
TG	TRANSFER GRILLE (TG) SHALL MATCH RG.	TITUS 50F
RAG	RETURN AIR GRILLES (RAG) SHALL BE ALUMINUM EGGCRATE WITH ALUMINUM BORDER SIZED FOR INSTALLATION IN A 24"x24" CEILING MODULE. PROVIDE LINED RETURN AIR PLENUM FULL SIZE OF GRILLE CONNECTION WITH DUCT CONNECTION SIZE INDICATED ON PLAN.	TITUS 50F
RG	RETURN AIR GRILLES (RAG) SHALL BE ALUMINUM EGGCRATE WITH ALUMINUM BORDER SIZED FOR INSTALLATION IN A 24X24 CEILING MODULE. PROVIDE LINED RETURN AIR PLENUM FULL SIZE OF GRILLE CONNECTION WITH DUCT CONNECTION SIZE INDICATED ON PLAN.	TITUS 50F

FAN SCHEDULE										
TAG	AIRFLOW (CFM)	ESP (IN W.C.)	MOTOR (W)	FAN RPM	DRIVE TYPE	VOLTS/PHASE	NOISE (SONES)	TYPE	BASIS OF DESIGN	NOTES
EF-1	100	0.5	35	815	DIRECT	120/1	3	CEILING	GREENHECK SP-A200	1,2
EF-2	75	0.5	16	773	DIRECT	120/1	2.5	CEILING	GREENHECK SP-LP0511-1	1,3
EF-3	75	0.5	16	773	DIRECT	120/1	2.5	CEILING	GREENHECK SP-LP0511-1	1,3
EF-4	75	0.5	16	773	DIRECT	120/1	2.5	CEILING	GREENHECK SP-LP0511-1	1,3

- NOTES:
- PROVIDE WITH BACKDRAFT DAMPER AND SPEED CONTROLLER FOR BALANCING.
  - FAN SHALL OPERATE CONTINUOUSLY.
  - FAN SHALL BE INTERLOCKED WITH LIGHTS.

HEAT PUMP SPLIT SYSTEM SCHEDULE																				
TAG	SUPPLY AIR (CFM)	ESP (IN. W.C.)	OUTSIDE AIR (CFM)	BLOWER MOTOR POWER (HP)	COOLING				HEAT PUMP				AUX. ELEC HEAT		VOLTAGE/PHASE		ORIENTATION	BASIS OF DESIGN	NOTES	
					TOTAL CAPACITY (MBH)	SENSIBLE CAPACITY (MBH)	EAT DB/WB (°F)	OUTDOOR TEMP DB (°F)	MIN. SEER	TOTAL CAPACITY (MBH)	EAT DB (°F)	OUTDOOR TEMP DB (°F)	MIN. HSPF	CAPACITY (KW)	NO. OF STAGES	INDOOR UNIT (V/Ø)				OUTDOOR UNIT (V/Ø)
FC/CU-1	760	0.5	55	1/3	23.3	17.7	80 / 67	95	14.0	13.1	68	17	8.2	5.76	1	208/1	208/1	HORIZONTAL	TRANE GAM5*24 / 5TWR4024	ALL
FC/CU-2	760	0.5	120	1/3	23.3	17.7	80 / 67	95	14.0	13.1	68	17	8.2	5.76	1	208/1	208/1	HORIZONTAL	TRANE GAM5*24 / 5TWR4024	ALL
FC/CU-3	760	0.5	100	1/3	23.3	17.7	80 / 67	95	14.0	13.1	68	17	8.2	5.76	1	208/1	208/1	HORIZONTAL	TRANE GAM5*24 / 5TWR4024	ALL
FC/CU-4	570	0.5	60	1/3	18.1	13.2	80 / 67	95	14.0	10	68	17	8.2	3.6	1	208/1	208/1	HORIZONTAL	TRANE GAM5*18 / 5TWR4018	ALL
FC/CU-5	1,520	0.5	130	3/4	48	35	80 / 67	95	14.0	29.6	68	17	8.2	7.2	1	208/1	208/3	HORIZONTAL	TRANE GAM5*48 / 5TWA4048	ALL

- NOTES:
- PROVIDE WITH 7-DAY PROGRAMMABLE THERMOSTAT. THERMOSTAT SHALL HAVE PROGRAMMABLE OCCUPANCY PERIODS TO ENERGIZE SUPPLY FAN AND OPEN ASSOCIATED OUTSIDE AIR DAMPER DURING OCCUPIED PERIODS.
  - PROVIDE WITH LITTLE GIANT CONDENSATE PUMP.

#	DATE	TITLE

PROJECT NUMBER:  
**00-000**

1167 PACE ST. - PHASE I  
1167 PACE ST, COVINGTON, GA

LEGEND, NOTES, DETAILS & SCHEDULES

M001

THIS DRAWING AND THE FILE FROM WHICH IT HAS BEEN CREATED ARE AN INSTRUMENT OF SERVICE FOR THIS PROJECT. THESE DOCUMENTS ARE THE SOLE PROPERTY OF THE ARCHITECT, AND ANY USE OF THESE DOCUMENTS FOR PURPOSES OTHER THAN THOSE ASSOCIATED WITH THIS PROJECT IS STRICTLY PROHIBITED.

RELEASED FOR CONSTRUCTION

