



architecture - interiors - procure - (404)964-549 - www.creativelicense.studio

#	DATE	TITLE

PROJECT NUMBER:
00-000

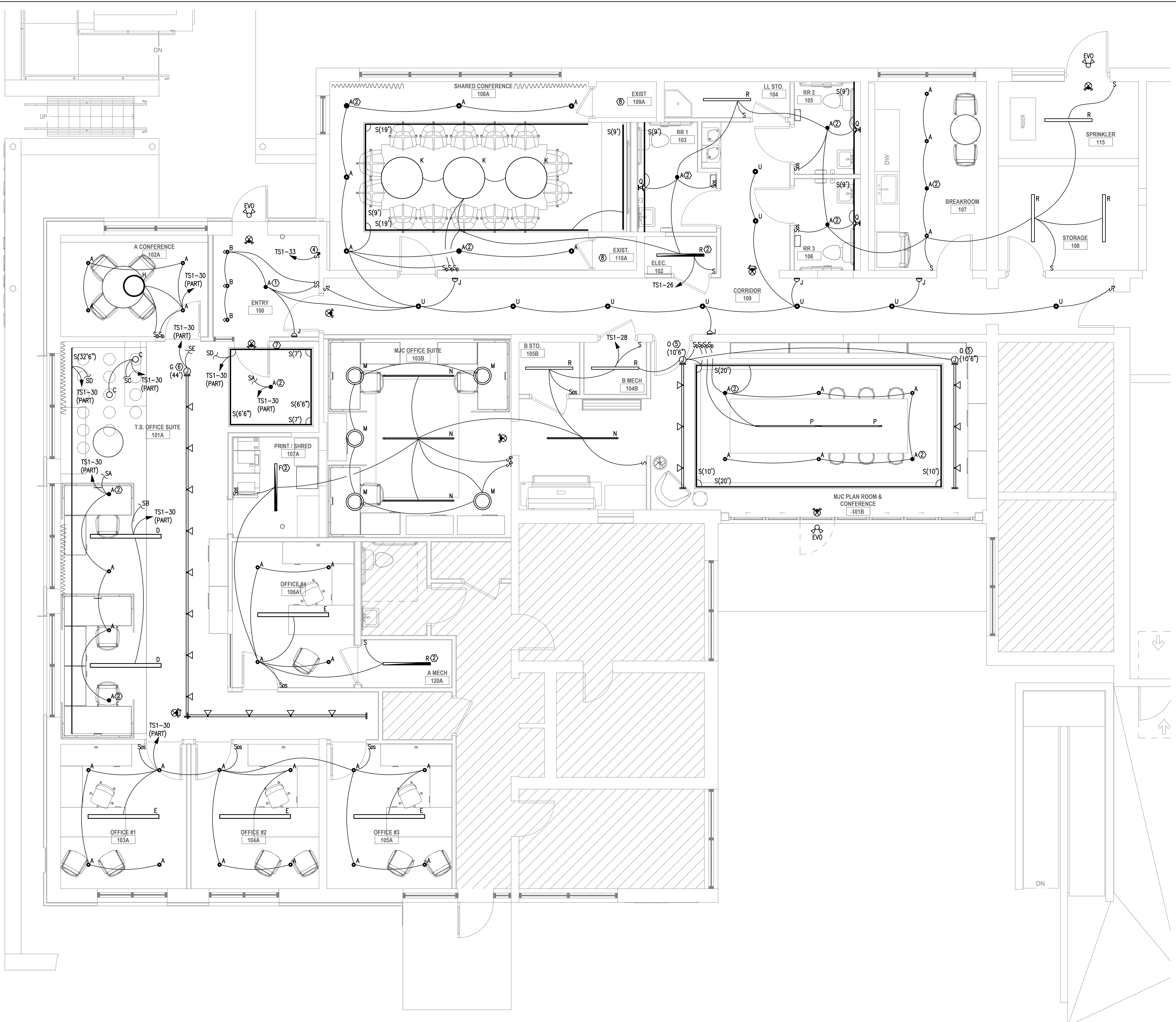
1167 PACE ST. - PHASE I
1167 PACE ST, COVINGTON, GA

LIGHTING PLAN

E201

THIS DRAWING AND THE FILE FROM WHICH IT HAS BEEN CREATED ARE AN INSTRUMENT OF SERVICE FOR THIS PROJECT. THESE DOCUMENTS ARE THE SOLE PROPERTY OF THE ARCHITECT, AND ANY USE OF THESE DOCUMENTS FOR PURPOSES OTHER THAN THOSE ASSOCIATED WITH THIS PROJECT IS STRICTLY PROHIBITED.

RELEASED FOR CONSTRUCTION



- GENERAL NOTES:**
- PULL AN UNSWITCHED PHASE CONDUCTOR TO ALL EMERGENCY AND EGRESS LIGHT FIXTURES UNLESS OTHERWISE NOTED.
- KEYNOTES:**
- FIXTURE SUPPLIED WITH EMERGENCY BATTERY PACK AND SHALL BE WIRED AHEAD OF SWITCH LEG TO SERVE AS NIGHT LIGHT. EMERGENCY BATTERY PACK SHALL BECOME ENERGIZED UPON LOSS OF PHASE CONDUCTOR POWER.
 - FIXTURE SUPPLIED WITH EMERGENCY BATTERY PACK. ALL FIXTURES LAMPS SHALL BE SWITCHED ON/OFF. EMERGENCY BATTERY PACK SHALL BECOME ENERGIZED UPON LOSS OF CIRCUIT POWER.
 - ROUTE CIRCUIT VIA CONTACTOR FOR PHOTOCELL ON/TIMECLOCK OFF OPERATION.
 - PROVIDE CONNECTION TO INTEGRALLY LIT SIGNAGE: 20A, 120V, 1PH. COORDINATE EXACT CONNECTION REQUIREMENTS WITH SIGNAGE PROVIDER PRIOR TO ROUGH-IN.
 - PROVIDE TRACK WITH 1.5A CURRENT LIMITING DEVICE.
 - PROVIDE TRACK WITH 5A CURRENT LIMITING DEVICE.
 - SWITCH BANK. REFER TO SWITCH BANK DETAIL, THIS SHEET, FOR FURTHER ELECTRICAL REQUIREMENTS PROVIDE SWITCHES AS FOLLOWS:
 SA - (1) SPST SWITCH SERVING TYPE 'A' DOWNLIGHTS
 SB - (1) DIMMER SWITCH SERVING TYPE 'D' LINEAR PENDANT LIGHTS
 SC - (1) DIMMER SWITCH SERVING TYPE 'C' PENDANT LIGHTS
 SD - (1) DIMMER SWITCH SERVING TYPE 'S' COVE LIGHTS
 SE - (1) DIMMER SWITCH SERVING TYPE 'G' TRACK LIGHTS
 - EXISTING LIGHTING AND LIGHTING DEVICES, THIS ROOM, TO REMAIN. CONNECT EXISTING LIGHTING AND CONTROLS TO NEW CIRCUIT 'TS1-26'.

1 LIGHTING PLAN - FIRST FLOOR