



architecture - interiors - procure - (404)964-549 - www.creativelicense.studio

#	DATE	TITLE

PROJECT NUMBER:
00-000

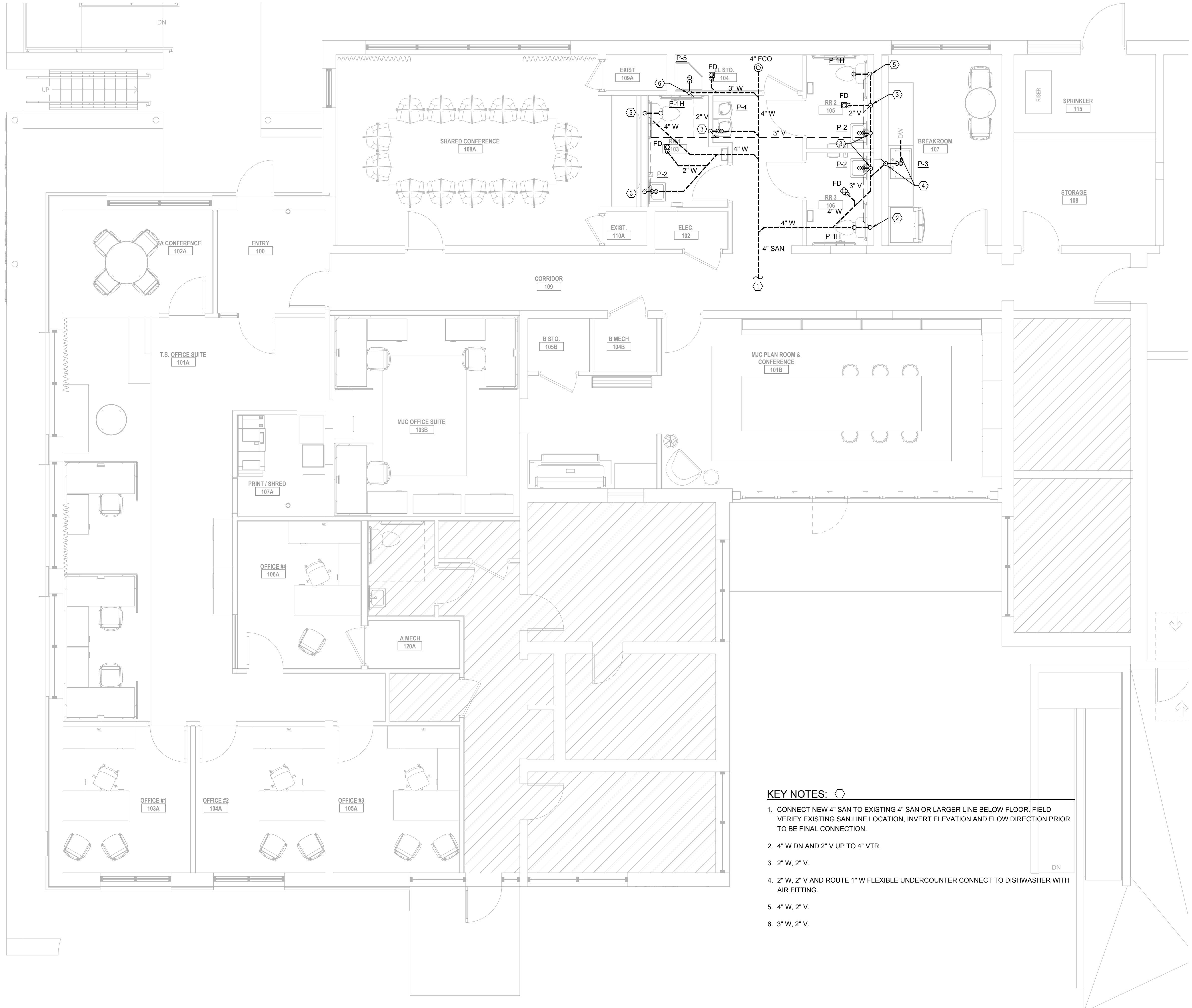
1167 PACE ST. - PHASE I
1167 PACE ST, COVINGTON, GA

PLUMBING
PLAN - SAN
& VENT

P101

THIS DRAWING AND THE FILE FROM WHICH IT HAS BEEN CREATED ARE AN INSTRUMENT OF SERVICE FOR THIS PROJECT. THESE DOCUMENTS ARE THE SOLE PROPERTY OF THE ARCHITECT, AND ANY USE OF THESE DOCUMENTS FOR PURPOSES OTHER THAN THOSE ASSOCIATED WITH THIS PROJECT IS STRICTLY PROHIBITED.

RELEASED FOR
CONSTRUCTION



- KEY NOTES:** ○
- CONNECT NEW 4" SAN TO EXISTING 4" SAN OR LARGER LINE BELOW FLOOR. FIELD VERIFY EXISTING SAN LINE LOCATION, INVERT ELEVATION AND FLOW DIRECTION PRIOR TO BE FINAL CONNECTION.
 - 4" W DN AND 2" V UP TO 4" VTR.
 - 2" W, 2" V.
 - 2" W, 2" V AND ROUTE 1" W FLEXIBLE UNDERCOUNTER CONNECT TO DISHWASHER WITH AIR FITTING.
 - 4" W, 2" V.
 - 3" W, 2" V.

1 PLUMBING PLAN - SAN & VENT
1/4" = 1'-0"