



architecture - interiors - procure - (404)964-549 - www.creativelicense.studio

#	DATE	TITLE

PROJECT NUMBER:  
00-000

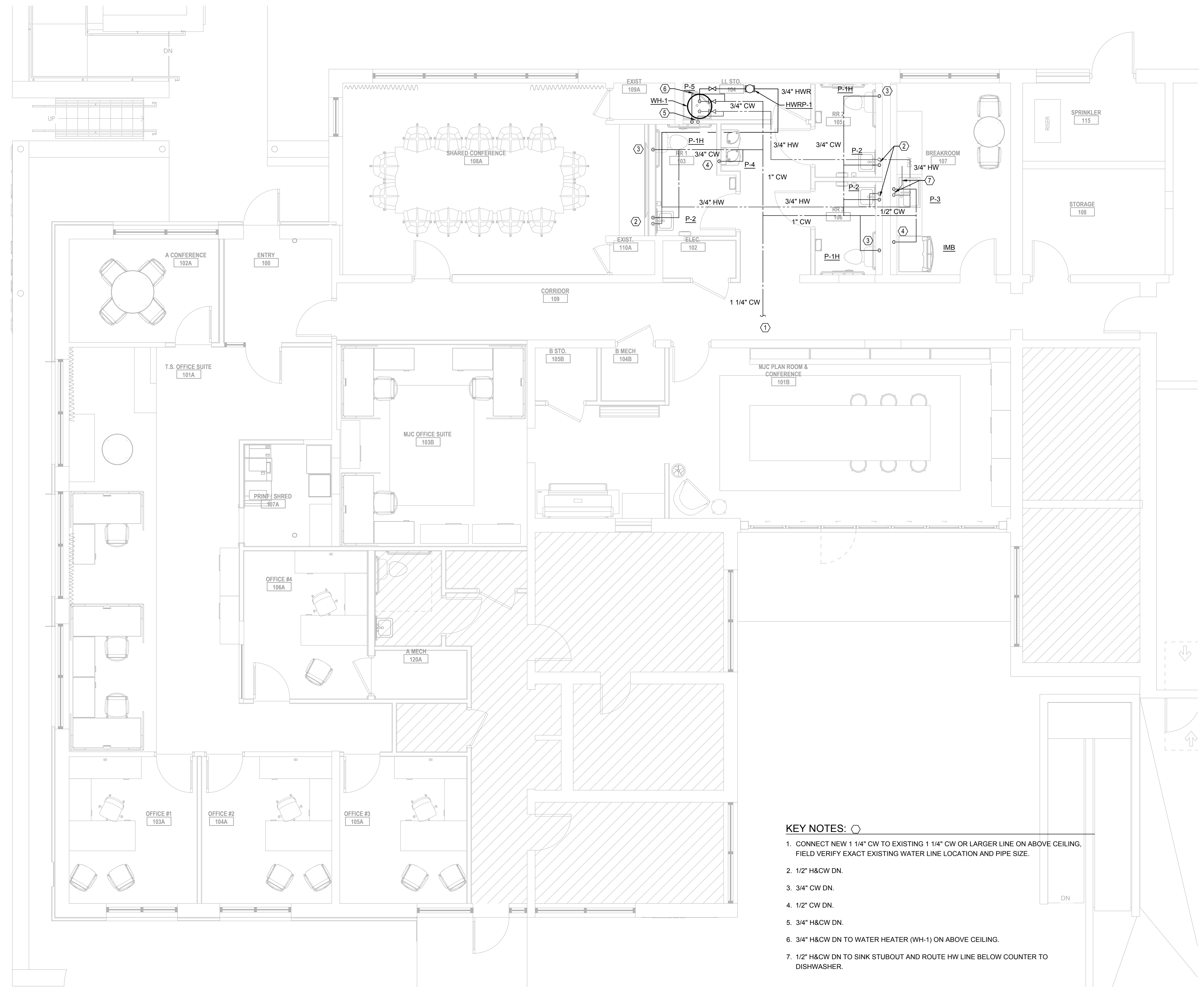
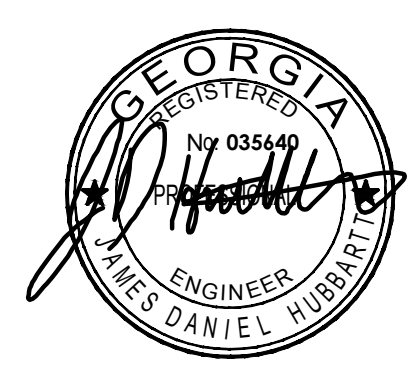
1167 PACE ST. - PHASE I  
1167 PACE ST, COVINGTON, GA

PLUMBING  
PLAN - DOM  
WATER

P201

THIS DRAWING AND THE FILE FROM WHICH IT HAS BEEN CREATED ARE AN INSTRUMENT OF SERVICE FOR THIS PROJECT. THESE DOCUMENTS ARE THE SOLE PROPERTY OF THE ARCHITECT, AND ANY USE OF THESE DOCUMENTS FOR PURPOSES OTHER THAN THOSE ASSOCIATED WITH THIS PROJECT IS STRICTLY PROHIBITED.

RELEASED FOR  
CONSTRUCTION



- KEY NOTES:**
- CONNECT NEW 1 1/4" CW TO EXISTING 1 1/4" CW OR LARGER LINE ON ABOVE CEILING, FIELD VERIFY EXACT EXISTING WATER LINE LOCATION AND PIPE SIZE.
  - 1/2" H&CW DN.
  - 3/4" CW DN.
  - 1/2" CW DN.
  - 3/4" H&CW DN.
  - 3/4" H&CW DN TO WATER HEATER (WH-1) ON ABOVE CEILING.
  - 1/2" H&CW DN TO SINK STUBOUT AND ROUTE HW LINE BELOW COUNTER TO DISHWASHER.

**1 PLUMBING PLAN - DOMESTIC WATER**  
1/4" = 1'-0"